

For Your Diaries : 2011

Sunday 1 May 2011, at 3pm. Baroque Voices
Sacred Heart Cathedral, Hill Street, Wellington. Contact Pepe Becker email: pepe.bv@paradise.net.nz, or visit: www.baroquevoices.co.nz

Sunday 8th May Communio Discussion Group 7.15pm in the Crypt
The next Communio discussion will be on the topic: Believing in the Resurrection or, The Logic of Love. This article examines the proposition that if Christ is the fullness of life his resurrection might be less astonishing than his death.
Contact Leo or Mary Buchanan, Ph 384 4760 or leobuchanan@xtra.co.nz

14-15 May Marist St Pats Rugby Football Club 40th Jubilee. Events include a luncheon prior to a premier grade game on Saturday 14 May, Jubilee celebrations at the Hataitai Clubrooms and Mass on Sunday. Contact Marist St Pats msprugby@xtra.co.nz or www.msprugby.co.nz.

Saturday 14 May Dove Catholic Fellowship for Women (1.30pm - 3.30pm)
The next Dove Fellowship meeting will be at Connolly Hall, Guildford Terrace (off Hill Street) Thorndon. Speaker Lucienne Hensel. Contact Sandra 475 5541

Monday 16 May at 12.30pm: Lecture at the Railway West Wing, Room RW 501. The Institute of Policy Studies, Victoria University & St Paul's Anglican Cathedral "Wall Street in the Wake of the Global Financial Crisis: A Religious Perspective." No charge - all welcome.

Tuesday 24 May 2011, between 8am and 10am, St Mary's College, Wellington Open Day. Ph 473 5554 or visit www.st-marys-wellington.school.nz

Friday 10 June St Vincent de Paul Annual Collection
Collectors are required for an hour between 6am and 2pm for the annual St Vincent de Paul Street Collection. Volunteers are also required for the St Vincent de Paul Shop at Newtown - a few hours anytime during the week. Contact Ross 389 7122

17-19 June Rachel's Vineyard Retreat (Wellington)
A weekend Retreat of spiritual and emotional healing for those whose lives have been touched by abortion. All enquiries are strictly confidential.
Contact Wendy Hill 027 733 2990 or info@rachelvineyard.org.nz

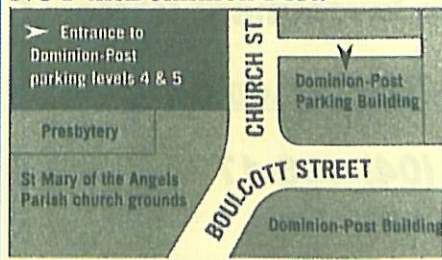
28 - 30 October 2011 St Brendan's School - Heretaunga 50th Jubilee.
To register your interest please email: stbrendans50thjubilee@gmail.com or phone 04 939 1909 for further information.

Traditional Latin Mass at St Mary of the Angels, this week and next (8 May) at 12.30pm. Enquiries: Neil Coup: 021-896-924

SUNDAY MASS PARKING

Parking available for 9am, 11am and 5pm Masses on levels 4 & 5 ONLY of the Dominion Post parking building, Church Street. Entrance to these levels is from the western side of the building as shown in the map. Levels 4 & 5 open 30 minutes before each mass and are locked 30 minutes after 11am & 5pm masses.

If your vehicle is locked in, you must contact the Presbytery NOT the Dominion Post.



This newsletter is kindly sponsored by:
Michael Burrowes
of Burrowes and Company
Barristers and Solicitors
phone (04) 473 7733



A1 Auto Electrical Limited
17 -19 Webb Street, Wellington
Phone 384 2215
All Electrical Repairs
ABS and Air Bag Faults

Please Support our Sponsors

INTRODUCING
The Rosary Card
with our compliments

Easy reference to regularly used Rosary Prayers is now available on the Rosary Card. Small enough to double as a bookmark the Rosary Card can be left within prayer or hymn books, for re-use or can be taken home for personal use. The Rosary Card features five regularly used prayers:
The Our Father, The Hail Mary, Doxology, The Apostles Creed, Hail Holy Queen.
Available free upon request. Simply call and we will send the quantity you require.

Harbour City
56 Onepu Road, Kilbirnie
Telephone 3878-301
Members of Funeral Directors Association of New Zealand.

WEST PLAZA HOTEL

LOCATION • COMFORT • STYLE

Weekend Special
\$120

One night's stay & cooked breakfast for two
Available Friday, Saturday and Sunday
Subject to availability
110 - 116 Wakefield Street, Wellington
p 0800 731 444
e reservations@westplaza.co.nz
book now westplaza.co.nz

Bullement.Fortune Architects Ltd
Proud to be architects for the interior and exterior refurbishment of St Mary of the Angels
Registered Architect: Denis Fortune
3 Francis Place Te Aro
WELLINGTON
Ph: 04 385 0286
Email: bullement.fortune@xtra.co.nz

Pleroma
Christian Supplies
www.christiansupplies.co.nz
- See our monthly newsletter in 'The Angelus'
- Freephone 0508 988 988 - Freefax 0508 988 989
email: order@pleroma.org.nz

The Angelus

St Mary of the Angels Parish

Church and Presbytery: 17 Boulcott Street, Wellington Central
Telephone: 473 8074 Facsimile: 473 8066 -
Parish Office Weekdays 9am to 4pm
Parish Website: www.smoa.org.nz

St Mary of the Angels is a diverse community which seeks to praise and thank God in a place of calm and beauty and strives to be Christ alive in Central Wellington

01 May 2011 : 2nd Sunday of Easter, Year A

An Easter Reflection

It's All So Depressing. Let's leave and go to Emmaus

The story of the two disciples on the road to Emmaus [Luke 24:13-35] is a wonderful tale of resurrection. These two had been so full of hope, that Jesus "would set Israel free." But now Jesus was dead and they were depressed. Some women puzzled them by saying they'd heard rumours that he was alive. Their friends however, went and saw nothing.



A Stranger Journeyed with Them

This stranger walked with them and they didn't recognise him. He explained the Scriptures to them and broke bread with them. Only then did they recognise that the stranger was Jesus.

I Think I'll Walk Away

I read this story recently of an American woman, Noreen Towers, who had worked hard among the poor of her city, but with no evident results. She had hoped to change their circumstances and inspire people to care more about them. One night she went to bed - planning to quit. The next morning, shortly after she awoke, something happened. It was as if Jesus himself said to her, "Can you not trust my plan for you?" She writes: "Then I realized that I did not have to see the plan; I only had to trust Jesus. I arose from my bed a different person." She had gone to sleep "a broken, defeated person" and rose as "a person with unshakeable hope and faith." Noreen Towers recognised Jesus in the strangers she was serving.



Rising from the Ruins and Ashes

Many of you will recognise this statue on the foreshore of Napier depicting the spirit of the people of Napier rising from the devastation of the 1931 earthquake. The stranger of Emmaus helps us rise from natural disaster too.

Easter Is Not Just an Historical Event

Jesus is risen and brings about resurrection amidst the wreckage created by sin, misfortune, natural disaster,

hatred and injustice in our lives. In every circumstance Jesus gives us the grace and courage to rise from the tomb of distress and depression, because he is the stranger who always walks with us when the only thing we want to do is escape to Emmaus.

Tom O'Connor s.m.

Parish Priest
Fr Barry Scannell SM
smoapp@xtra.co.nz
Assistant Priests
Fr Tom O'Connor SM
Fr Chris Skinner SM
Pastoral Worker
Sr Frances Gibbs CSB
Director of Music
Robert Oliver
robert.oliver@paradise.net.nz
Ph: 934 2296
Parish Manager
Penny Holden
smoamanager@xtra.co.nz
Parish Secretary
Carol Kolkman
smoaooffice@xtra.co.nz

MASSES

Sunday 7am 9am 11am 5pm
Monday to Friday 7:30am 12:05pm & 5:15pm
Saturday 11am

Public Holidays 9am

EACH MONTH

1st Saturday Marian Devotions 10:30am
4th Saturday Sacrament of the Anointing at 11am Mass

ADORATION

Monday to Friday 7am-7:30am
Friday 11am-noon

RECONCILIATION

Monday to Thursday 11:30am-12pm 12:30pm-1pm 4:30pm-5pm
Friday 11am-12pm 12:30pm-1pm 4:30pm-5pm
Saturday 10:30am-11am 4pm-5pm



INVEST IN YOUR FAITH

This Week's Readings

First Reading Acts 2:42-47
The faithful lived together and owned everything in common.

Second Reading 1 Peter 1:3-9
He has given us a new birth as his children, by raising Jesus Christ from the dead.

Gospel Reading John 20:19-31
After eight days Jesus came in and stood among them.

Next Week's Readings

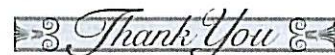
First Reading Acts 2:14, 22-33
 Psalm 15

Second Reading 1 Peter 1:17-21

Gospel Luke 24:13-35

Last Sunday's Collection

Total	\$6,268
Parish Expenses	\$4,450
Support of House	\$1,818
Easter Collection	\$1,032
Holy Places	\$1,935
Caritas (final total for Lent)	\$4,987



Note: Choir Practice Times

Choir of St Mary of the Angels - Thursdays at 7.30pm
 Young Angel Voices - Thursdays at 4.30pm
 Schola Cantorum (Youth) - Fridays at 5.30pm

Mass has been offered for:

Recently Deceased

Anniversaries Ian Jones, James Jackson, John Keating, John Blake, Daniel O'Rourke

Prayers for the Sick Bill McLaughlin, Trevor Hyde, Mary Egan, Oinah Macpherson, Maureen McDonald, Patricia Smyth, Ron Blair, Anna Zonotti, Mary Jarvis, Paul Carr, Vicki McPhee, Kathleen Roskam, Peter Tawhaki, Imelda Reeve, Mary Foote, Cecilia Dickson, Maria Kasperowicz, Peter Schmidt, Leuteotifa Toma, Bishop Barry Jones, Marion Hyland.
Please remember in your prayers, these and the other sick of the Parish. If you know of anyone who is confined to their home or who needs a visit with Holy Communion, please contact Sister Frances at is Parish Office. Phone 473 8074

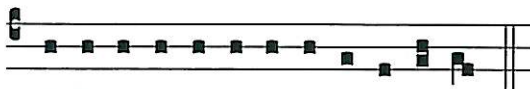
Responsorial Psalm 117

R. Give thanks to the Lord for he is good, his love is everlasting.

Let the sons of Israel say:
 'His love has no end.'
 Let the sons of Aaron say:
 'His love has no end.'
 Let those who fear the Lord say:
 'His love has no end.' **R.**

I was thrust, thrust down and falling
 but the Lord was my helper.
 The Lord is my strength and my song;
 he was my saviour.
 There are shouts of joy and victory
 in the tents of the just. **R.**

The stone which the builders rejected
 has become the corner stone.
 This is the work of the Lord,
 a marvel in our eyes.
 This day was made by the Lord;
 we rejoice and are glad. **R.**



Alle-lu-ia, Alle-lu-ia, Alle-lu-ia.

Offertory Hymn For 11am Mass

No 122 "Alleluia Sing To Jesus." (Verses 1, 3 and 4.)

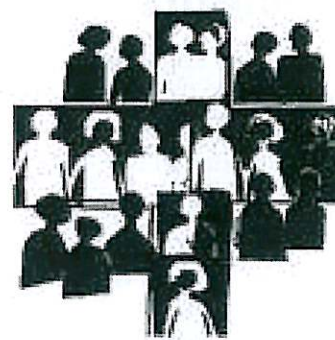
Useful NZ Websites:

CathNews New Zealand - a free twice-weekly publication.
 To sign up for your free copy, visit www.cathnews.co.nz

Jeromes Bookstore - specialist Catholic online bookseller
www.jeromes.co.nz

Pleroma Christian supplies: www.christiansupplies.co.nz

Reflection: Being Easter People - Serving Christ



When the Church cares for the sick, it serves Christ Himself in the suffering members of His Mystical Body. When it follows the example of the Lord Jesus, who "went about doing good and healing". (Acts 10:38) the Church obeys His command to cure the sick.

The Church shows this solicitude not only by visiting those who are poor in health, but by nourishing them with the Eucharist and by raising them up through the Sacrament of Anointing during their time of illness or as

they approach their death. Finally, the Church offers prayers for the sick and commends them to God, especially in the last moments of life. [Refer to the Decree of the Sacred Congregation for Divine Worship. Rome 12/72].

Illness and infirmity come to people from all walks of life and those who receive the Sacraments are surely an embodiment of the 'Prayer of the Faithful.' We have several people here in the Parish preparing to meet their Lord. It is a great privilege and blessing to be able to bring the Eucharist to them and to arrange for them to have the opportunity of receiving the Sacraments of Reconciliation and Anointing.

There are many of our good Catholic people now placed in Rest Homes throughout the country. Though they may be well looked after, they are also unfortunate in many ways as they get caught up in a system that is lost. Church and Religion can mean nothing to Providers, whereas the Sacraments and a visit from a member of the Pastoral Team or a parishioner could make a big difference in the little time some of them might have.

If you know of someone who is sick, lonely, housebound, or in a Rest Home near you, please remember them in your prayers and please let me know. I would also remind you that on the 4th Saturday of each month we have the Anointing of the Sick at the 11am Mass. All are most welcome.

Thank you. Sr Frances Gibbs csb

Society of St Vincent de Paul

The Society of St Vincent de Paul is an international Catholic lay organisation inspired by the Gospel of Jesus Christ. Vincentians work to promote human dignity and justice through personal contact with those in need.

Volunteers are required - please contact Ross ph 389 7122

- Collectors are required for an hour between 6am and 2pm on Friday 10 June for the annual Street Appeal
- The Society's Newtown Shop requires helpers for a few hours during the week to help with sorting out donated items and dealing with the public

For more information on the Society of St Vincent de Paul: www.svd.org.nz



SMAYACS

St Mary of the Angels Young Adult Catholics

Youth Mass (8th May at 5pm)

The SMAYACS organise a Youth Mass on the second Sunday each month. Help with preparing the Liturgy is always welcome - particularly for the Readings, Music and Offertory.

Holy Hour (Thursday 19th May)

A youth Holy Hour is held on the 3rd Thursday each month, from 6pm-7pm. A great opportunity for quiet time, prayer, music and reflection.

Regular SMAYACS Events:

Theology on Tap - a monthly Sunday night meeting with guest speaker at the Hotel Bristol, Cuba Street.

Vegetable Collection for the Soup Kitchen - each fortnight a group meets to collect vegetables from the market and take them to the Soup Kitchen, run by the Home of Compassion.

To contact us with any ideas, comments or questions, please email smayacs@gmail.com

World Youth Day fundraiser. Tuakana Teina is a great opportunity for local established and amateur artists to exhibit and to support our Wellington Pilgrims. Entries close 20 May. Contact: 04 496 1731 or visit tuakanateina2011@gmail.com

Catholic Accommodation in Wellington:

The "Parish to Parish for Bed & Breakfast has been successfully operating for over 7 years. Parishioners from Australia and N.Z. enjoy the great hospitality and reasonable tariff, \$30 for one person, \$25 each for two or more persons, per night. This includes continental breakfast. For more information about offering accommodation, please contact: Marie Anderson Ph 03 3595541, or email marie.ian@xtra.co.nz

Confirmation for Adults and Young People

Archbishop John Dew is conferring the Sacrament of Confirmation for our Pastoral Area on 26 June. If any young people and adults wish to be confirmed, please contact the Parish Office (Ph 473 8079) or one of the Priests at St Mary of the Angels.

LT McGuinness
 BUILDING CONTRACTORS
 9 Francis Place,
 PO Box 9639, Wellington
 Phone (04) 384 8455 Fax (04) 801 8455
 Email: ltm@mcguinness.co.nz

Little Peckish
 Café
 Feeling a little peckish?
 Dukes Arcade • Great food, coffee, service
 Office catering available
 Phone 499 7769 • Mobile 0274 461 650

NEW WORLD
 WELLINGTON CITY
 279 WAKEFIELD ST.
 OPEN 7 DAYS | 7AM - MIDNIGHT
WWW.WGTNCITYNEWWORLD.CO.NZ

CDF
 Catholic Development Fund (Wellington)
 Help us to Help Others.
 For our latest Term Investment Rates
 visit us at: www.cdf.co.nz
 or telephone (04) 496-1733