

## For Your Diaries : 2015

**29 November, Advent Vespers with St John's Presbyterian Church**  
St John's Church, corner of Willis and Dixon St, 7pm

**29 November and 13 December, Latin Mass**

San Antonio Church, 78 Oroua St., Eastbourne, at 12.30pm. See us on Facebook: [www.facebook.com/WellingtonLatinMass](http://www.facebook.com/WellingtonLatinMass). There is Latin Mass on 2nd, 4th, and 5th (if any) Sundays of the Month 12.30pm at San Antonio Church in Eastbourne. For Enquiries, ring/text Neil at 021896924.

**29 November, Theology on Tap**

Theology on Tap will be held tonight, Sunday 29 November at the Hotel Bristol on Cuba St at 6.30pm. This month's speaker is Fr Neil Vaney sm.

**3 December, SMAYACs End of Year Dinner,**

St Mary of the Angels Young Adults group invites everyone to their last event for the year will be on this Thursday 3 December. All are welcome to join us for adoration at 6pm in the St Mary of the Angels Parish Hall. We will then go for dinner at Heaven Woodfire Pizzas, 247 Cuba Street at 7.15pm. Come along for adoration or meet us later for dinner.

**2 December, Charismatic Mass**

All are welcome to attend a Charismatic Mass at Our Lady of Grace Church, Heretaunga, on Wednesday 2nd December, 7.30pm.

**4 December, Taize Prayer with the Sisters of Compassion**

The Sisters of Compassion are offering Taize Prayer at the Island Bay Home of Compassion Chapel on Friday 4th December. The evening prayer is from 7pm - 8pm. There is plenty of parking and it is the No. 1 bus route. You are most welcome. There will be a light supper to follow.

**5 December, Christian meditation**

There will be a day of reflection and meditation at the Home of Compassion, Island Bay on Saturday 5th December from 10am to 3pm. Bring a lunch and donation to cover expenses. Contact Sr Sue Cosgrove 3837769 for further information. All are most welcome.

**8 December, Year of Mercy**

Pope Francis has invited the Church to enter into a special Jubilee Year of Mercy, beginning on 8 December 2015. Please come to Eucharist and Opening of the Holy Door of Mercy at Cathedral of the Sacred Heart, Wellington on Tuesday 8 December 2015 at 7pm.

**16 December, Carols with the Angels**

Our annual Carols with the Angels will be held on Wednesday 16 December, 7.30pm at St John's Presbyterian Church, corner Willis and Dixon St.

**WEST PLAZA HOTEL**  
LOCATION • COMFORT • STYLE

**WEEKEND SPECIAL \$135**

One night's stay & cooked breakfast for two

**BOOK NOW**

*\*Subject to availability*

[westplaza.co.nz](http://westplaza.co.nz) / P 0800 731 444

E [reservations@westplaza.co.nz](mailto:reservations@westplaza.co.nz)

110 Wakefield St, Wellington

This newsletter is kindly sponsored by:

**Michael Burrowes**  
of Burrowes and Company  
Barristers and Solicitors  
phone (04) 473 7733

**BURROWES**  
and Company

Barristers and Solicitors

**Books \* DVD's \* Statues \* Gifts**  
**Rosaries \* Missals \* Bibles \* Music**  
**Teaching \* Baptism \* Confirmation**  
**First Holy Communion**  
**Bible Study \* Advent & Christmas**

[www.christiansupplies.co.nz](http://www.christiansupplies.co.nz)

**Pleroma**  
**Christian Supplies**  
Specialists In Catholic Product



Is dealing with a  
**Locally Owned  
Funeral Director**  
important to you?

**Harbour City**

FUNERAL HOME

Wellington

56 Onepu Road, Kilbirnie

Telephone 387-8301

Email: [harbour@funeral-link.co.nz](mailto:harbour@funeral-link.co.nz)

[www.harbourcityfunerals.co.nz](http://www.harbourcityfunerals.co.nz)

## A LEGACY OF FAITH



Remembering St Mary of the Angels in your will provides an ideal opportunity to make a statement of your faith and to give resources that will support your Church for years to come. Please contact the Parish Office for further details. Phone (04) 473 8074.

## Quality Te Aro Offices

5-7 Vivian Street, Wellington

Great location close to Cafe district  
Busy arterial road  
Air conditioned  
Car parking available

Office suites available at an affordable price. Semi-serviced suites (approx 18sqm) that are fully furnished. There is also a company floor area (approx 200sqm) with 5x partitioned offices, Board room and Meeting room. Shared kitchen and shower facilities. Car parking available in the building at an additional rate.

This is a must see for new businesses on a budget. Earthquake Engineering Evaluation IEP Report NBS 80 %

Contact by e-mail for further information: [mariabaldock@gmail.com](mailto:mariabaldock@gmail.com)

# The Angelus

St Mary of the Angels Parish

**Church and Presbytery**

**17 Boulcott Street**

**Wellington Central**

**Telephone: 04 473 8074**

**Parish website: [www.smoa.org.nz](http://www.smoa.org.nz)**

*St Mary of the Angels is a diverse community which seeks to praise and thank God in a place of calm and beauty and strives to be Christ alive in Central Wellington*

## MASS TIMES

### Sunday

7am *St Mary of the Angels Parish Hall*

9am *Sacred Heart Cathedral*

12pm *St John's Presbyterian Church*

5pm *St Joseph's Church, Mt Victoria*

### Monday to Friday

*St Mary of the Angels Parish Hall*

7:30am, 12:05pm & 5:15pm

### Saturday

11am *St Mary of the Angels Parish Hall*

### SACRAMENT OF ANOINTING

*St Mary of the Angels Parish Hall*

11am Mass 4th Saturday of each month

### ADORATION

*St Mary of the Angels Parish Hall*

**Monday to Friday** 6:45am - 7:30am

**Friday** 11:00am-12:00pm

### RECONCILIATION

*St Mary of the Angels Presbytery*

**Monday to Thursday** 11:30am-12:00pm

12:30pm - 1:00pm

4:30pm - 5:00pm

### Friday

11:00am-12:00pm

12:30pm - 1:00pm

4:30pm - 5:00pm

### Saturday

10:30am-11:00am

4:00pm - 5:00pm

### Parish Priest

Fr Barry Scannell SM

[smoapp@extra.co.nz](mailto:smoapp@extra.co.nz)

### Assistant Priest

Fr Carl Telford SM

### Adult Education

Fr Michael Young SM

### Pastoral Worker

Sr Frances Gibbs CSB

### Director of Music

Robert Oliver

[robert.oliver@paradise.net.nz](mailto:robert.oliver@paradise.net.nz)

### Parish Accountant

Jeanette Temelo

[smoamanager@extra.co.nz](mailto:smoamanager@extra.co.nz)

### Parish Office

[smoaoffice@extra.co.nz](mailto:smoaoffice@extra.co.nz)

## 29 November 2015, 1st Sunday of Advent, Year C

### Advent Vespers

Tonight we celebrate Advent Vespers with our wonderful friends from St John's Presbyterian Church. This has been a long tradition over many years between our two Churches. I hope that many parishioners from St Mary of the Angels will attend. St John's has been so generous to us since our Church closed in July 2013 and we need to come tonight in great numbers to show our appreciation.

Please make an effort and participate with the Choir's from both St John's and St Mary of the Angel's in this Advent liturgy.

**When: 7pm Sunday 29 November**

**Where: St John's Presbyterian Church, corner Willis & Dixon Sts**

### Year of Mercy

Pope Francis has invited the Church to enter into a special Jubilee Year of Mercy, beginning on 8 December 2015. To mark this occasion you are all warmly invited to:

**Eucharist and  
Opening of the Holy Door of Mercy**

*at*  
**Cathedral of the Sacred Heart, Wellington**

*on*

**Tuesday 8 December 2015 at 7pm**

### St Mary of the Angels Christmas Cards

St Mary of the Angels Christmas Cards are now available for purchase either after Mass on Sunday or from the Parish Office.

A6 \$15 for a pack of 12  
DLE \$15 for a pack of 12



**This Week's Readings**

**First Reading:** Jeremiah 33:14-16  
*I will cause a good seed to spring forth from David.*

**Second Reading:** Thessalonians 3:12 - 4:2  
*When Christ comes may he strengthen your hearts in holiness.*

**Gospel:** Luke 21:25-28, 34-36  
*Your redemption is near at hand.*

**Next Week's Readings**

**First Reading:** Baruch 5:1-9

**Psalm:** Ps 125

**Second Reading:** Philippians 1:3-6

**Gospel:** Luke 3:1-6

**Last Sunday's Collection**

**Total** \$4,820

**Parish Expenses** \$3,278

**Support of House** \$1,542



**Planned Giving**

If you would like to join the St Mary of the Angels Planned Giving Scheme please contact the Parish Office. A tax rebate of 33.3% may be claimed on all your contributions.

**Columban Calendars**

2016 Columban Calendars are available for purchase from the Parish Office for \$12 each. All proceeds go toward supporting St Columbans Mission Society.



**Mass has been offered for:**

**Recently Deceased:** Zilla Gini, Peter McLeavey

**Anniversaries:** Su-yen Bok, Matthew Stevens, James O'Neill, Joan O'Shea, Grace Smith, Nora Johnson

**Prayers for the Sick:** Ricky McDonald, Bill Prior, Peter Aston, Johanna van Zijl, Richard Wright, Losalia Leo, Patricia Smyth, Maureen McDonald, John Foden, Joanna Veltman, Imelda Reeve, Jan Tuinman, Kath Simes, Kathleen Phelan, Jeanette Parker.

*Please remember in your prayers, these and the other sick of the Parish. If you know of anyone who is confined to their home or who needs a visit with Holy Communion, please contact Sister Frances at the Parish Office.*

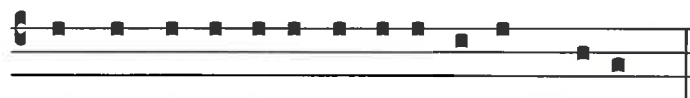
**Responsorial Psalm Ps 24**

**R To you, O Lord, I lift my soul.**

Lord, make me know your ways.  
Lord, teach me your paths.  
Make me walk in your truth, and teach me:  
for you are God my saviour. **R.**

The Lord is good and upright.  
He shows the path to those who stray,  
he guides the humble in the right path;  
he teaches his way to the poor. **R.**

His ways are faithfulness and love  
for those who keep his covenant and will.  
The Lord's friendship is for those who revere him;  
to them he reveals his covenant.. **R.**



Ad te Domi-ne le-va-vi a-nimam me- am.

*To thee, O Lord, have I lifted up my soul.*

**Advent Meditations**

The Choir of St Mary of the Angels invites everyone to Advent Meditations after 12pm Mass each Friday. Midday prayers for the Season of Advent, with a small group from the choir singing the 'O' antiphons and other music for Advent.



**Carols with the Angels**

Our annual Carols with the Angels will take place on Wednesday 16 December, 7.30pm at St John's Presbyterian Church, corner Willis and Dixon St. The St Mary of the Angels Choir will lead the singing along with the Salvation Army Band Please come and join in this special celebration!

**Prayer for Seismic Strengthening Work**

Gracious God, Creator of the Universe, you made us in your own image and likeness.

You gave us wisdom and understanding, grateful hearts and creative minds.

We pray that our beautiful Church will be strengthened against the peril of earthquake through the generosity of parishioners, the community of Wellington and people throughout New Zealand.

We ask, Lord, that you abundantly bless those who have already donated funds, skill and expertise to this project.

May St Mary of the Angels Church be a symbol of a unified community that will gather to praise and thank you.

Mary our Mother, pray for us.

**SMOA Recipe Book**

We are planning to publish a St Mary of the Angels Cook Book as a seismic strengthening fundraiser. We welcome your participation by providing recipes for the book.

We would like a range of recipes to reflect the diversity of our congregation. Please send in as many recipes as you like with your name by email to: terrydodson@vodafone.co.nz or by leaving them at the Parish office. We would like every family at SMOA to give a recipe.

**Call to Action to Support Refugees**

Following recent publicity highlighting the community and Church's support for refugees coming to NZ, Cardinal John has appointed Lesley Hooper at Catholic Social Services as the Diocesan Coordinator. Lesley is the main contact for queries, offers and information for the Diocese from individuals, parishes or other groups.

Contact details: Lesley Hooper, (04) 385 8642, or by email l.hooper@wn.catholic.org.nz

**SMAYACs**

*(Saint Mary of the Angels Young Adult Catholics)*

**Theology on Tap**

Theology on Tap is a monthly speaker series hosted by the St Mary of the Angels young adults group for young adults in the Archdiocese.

The next Theology on Tap will be held **tonight, Sunday 29 November** at the Hotel Bristol on Cuba St at 6.30pm. This month's speaker is Fr Neil Vaney sm. He is the current vicar-provincial for the Society of Mary, and is involved with several young adult initiatives including Catholic Discipleship College and Hearts Aflame summer school. He will talk about the elements needed for a full youth ministry, illustrating this from his own experience.

**End of Year Dinner**

SMAYACs last event for the year will be on this **Thursday 3 December**. All are welcome to join us for adoration at 6pm in the St Mary of the Angels Parish Hall. We will then go for dinner at Heaven Woodfire Pizzas, 247 Cuba Street at 7.15pm. Come along for adoration or meet us later for dinner.

**St Vincent de Paul Pregnancy Assistance**

Do you know someone who may need clothing, bedding, cloth nappies or a bassinet?

Pregnancy Assistance gives out free baby items to pregnant women and new parents on low wages or in need. Phone 389 7122 for more information, or come in and ask for us at the Vinnie's shop, 207 Riddiford St, Newtown. This service is available from 10am - 2pm, Wednesday to Friday.

**Sacramental Gifts**

Looking for a Sacramental Gift? The John Paul II Centre for Life 6 Parumoana St, Porirua, has a small selection of religious articles (including rosaries) for sale. Open Fridays 12pm to 2pm.



**The Catholic Enquiry Centre**

The Catholic Enquiry Centre is where you will find information about the Catholic Faith. If you have a question, or you know someone who is interested in the Catholic Faith, contact Fr Allan Jones (Director) or drop in for a visit. [www.catholicenquiry.org.nz](http://www.catholicenquiry.org.nz); 04 385 8518; or email [info@catholicenquiry.org.nz](mailto:info@catholicenquiry.org.nz).

**ST MARY OF THE ANGELS EARTHQUAKE STRENGTHENING APPEAL**

I would like to help preserve St Mary of the Angels Church

Name: \_\_\_\_\_

Address: \_\_\_\_\_

Email: \_\_\_\_\_ Tel: \_\_\_\_\_

My contribution will be made by:

- Direct Credit
- Cheque PLEASE SPECIFY AMOUNT
- Cash \$ \_\_\_\_\_

Donations can be sent to:  
Seismic Strengthening Fund  
St Mary of the Angels  
17 Boulcott St  
Wellington 6011

Bank Account Details:  
02-0536-0003242-23  
Bank of New Zealand  
Lambton Quay  
Wellington

St Mary of the Angels is registered with the Charities Commission. All donations are tax deductible and a receipt issued.

