

## For Your Diaries : 2017

### 27 August, Maori Pastoral Care Collection

The Māori Pastoral Care collection is taken to support the work of the Māori Pastoral Care team of the Archdiocese. Your koha to this work is welcome. Tēnā koutou katoa.

### 28 August - 1 September, Beethoven: The Piano & Violin Sonatas

Beethoven's ten Sonatas for Violin and Piano present a formidable, unique challenge to violinists and pianists. Michael Houstoun and Bella Hristova will be performing each lunchtime at 12pm in the Michael Fowler Centre.

### 29 August, RCIA (Rite of Christian Initiation for Adults)

The RCIA programme for 2017-2018 begins with an enquiry night at 7.15pm in the Parish Hall.

### 29 August, Holy Hour

You are invited to a Holy Hour beginning at 7.30 pm in the Cathedral Chapel to pray for vocations to priesthood and consecrated life.

### 7 September, Quiet Day with Suzanne Aubert

An invitation to spend a few hours resting and reflecting on an aspect of the life and vision of Suzanne Aubert. 10.30am to 2.30pm at Our Lady's Home of Compassion, 2 Rhine Street, Island Bay.

### 7 September, NZ String Quartet

Join us on our 30th-anniversary tour for a concert filled with passion, yearning, joy and heartache. St Mary of the Angels Church at 7.30pm. Admission: Adult \$45, Seniors \$40, Tertiary Student \$15, School Children \$5

### 10-16 September, Social Justice Week

Challenge 2000 is running a week of fun and interactive activities for young people, children and young adults. All events will be based at 1 Wanaka Street, Johnsonville. To sign up, check out the flyer in the foyer for more information, all are welcome.

### 22-24 September, 'Current of Grace' Conference

"Celebrating the diverse fruits and family of the Catholic Charismatic Renewal in New Zealand". At the Distinction Hotel and the Cathedral of the Holy Spirit, Palmerston North. For further information and to register on-line visit [www.ccrnz.org/register2017](http://www.ccrnz.org/register2017)

### 11-12 November, Engaged Encounter

Engaged Encounter is a weekend experience for couples intending to be married. Presbytery, 301 Karori Road, Karori. For details go to the website at [www.ceewellington.org.nz](http://www.ceewellington.org.nz) or phone Kate & Simon Olsen: (04) 801 6192, or email [simonolsen@gmail.com](mailto:simonolsen@gmail.com).

# Pleroma

Books \* DVD's \* Statues \* Gifts  
Rosaries \* Missals \* Bibles \* Music  
Teaching \* Baptism \* Confirmation  
First Holy Communion  
Bible Study \* Advent & Christmas

## Christian Supplies

Specialists In Catholic Product [www.christiansupplies.co.nz](http://www.christiansupplies.co.nz)



# NEW WORLD

Wellington City

Open 7 days 7am - 11pm

279 Wakefield Street. Ph 04 384 8054

[www.newworld.co.nz/wellingtoncity](http://www.newworld.co.nz/wellingtoncity)



Is dealing with a  
**Locally Owned  
Funeral Director**  
important to you?

Harbour City  
FUNERAL HOME

Wellington  
56 Onepu Road, Kilbirnie  
Telephone 387-8301  
Email: [harbour@funeral-link.co.nz](mailto:harbour@funeral-link.co.nz)  
[www.harbourcityfunerals.co.nz](http://www.harbourcityfunerals.co.nz)

## A LEGACY OF FAITH



Remembering St Mary of the Angels in your will provides an ideal opportunity to make a statement of your faith and to give resources that will support your Church for years to come.

Please contact the Parish Office for further details.  
Phone (04) 473 8074.

## Quality Te Aro Offices

5-7 Vivian Street, Wellington

Great location close to Cafe district  
Busy arterial road  
Air conditioned  
Car parking available

Office suites available at an affordable price. Semi-serviced suites (approx 18sqm) that are fully furnished. There is also a company floor area (approx 200sqm) with 5x partitioned offices, Board room and Meeting room. Shared kitchen and shower facilities. Car parking available in the building at an additional rate.

This is a must see for new businesses on a budget. Earthquake Engineering Evaluation IEP Report NBS 80%.

Contact by e-mail for further information:  
[mariabaldock@gmail.com](mailto:mariabaldock@gmail.com)

# The Angelus

## St Mary of the Angels Parish

### Church and Presbytery:

17 Boulcott Street,  
Wellington Central

Telephone: 473 8074

Parish website: [www.smoa.org.nz](http://www.smoa.org.nz)

*St Mary of the Angels is a diverse community which seeks to praise and thank God in a place of calm and beauty and strives to be Christ alive in Central Wellington*

## 27 August 2017, 21st Sunday in Ordinary Time

### Adult Rite of Christian Initiation (RCIA)

The Adult Rite of Christian Initiation (RCIA) is the process through which adults learn about the Catholic Faith. The RCIA programme for 2017-2018 begins with an enquiry night this Tuesday 29 August at 7.15pm in the Parish Hall.

If you know someone whom you think may be interested in learning more about the Catholic Faith invite them to come to this enquiry night. A lovely way to support them would be to bring them along yourself. This would give them a great deal of encouragement in their search for God in their lives.

### Maori Pastoral Care Collection

Today the Māori Pastoral Care collection will be taken to support the work of the Māori Pastoral Care team of the Archdiocese. The team supports Māori Catholics in their participation in the Church as Māori, advises parishes and schools on these matters, and helps to develop bicultural awareness and practices throughout the Archdiocese. Your koha to this work is welcome. Tēnā koutou katoa.

Envelopes can be found on the tables at the entrance to the Church.

### Parish Preparation for the Archdiocesan Synod

The Wellington Archdiocesan Synod will be held over the weekend of 15-17 September. Cardinal John has explained that preparation for the Synod should be "a discernment process, listening to the Spirit then to one another as we seek to understand where God is leading us."

At St Mary of the Angels we will follow a two-step process to allow parishioners to reflect on the topics for the Synod. During August we invite you to take time for prayer and meditation either individually or by arranging small groups with others.

Then you are invited to share your responses with our Synod delegates after Masses on 3 and 10 September.

Father Barry Scannell s.m.  
Parish Priest

### Parish Priest

Fr Barry Scannell SM  
[smoapp@xtra.co.nz](mailto:smoapp@xtra.co.nz)

### Assistant Priests

Fr Kevin Conroy SM  
Fr Joe Savei SM

### Pastoral Worker

Sr Frances Gibbs CSB

### Director of Music

Robert Oliver  
[robert.oliver@paradise.net.nz](mailto:robert.oliver@paradise.net.nz)

### Parish Accountant

Jeanette Temelo  
[smoamanager@xtra.co.nz](mailto:smoamanager@xtra.co.nz)

### Parish Office

[smoaooffice@xtra.co.nz](mailto:smoaooffice@xtra.co.nz)

### MASSES

Sunday 7am, 9am, 11am, 5pm

Monday to 7:30am, 12:05pm,  
Friday & 5:15pm

Saturday 11am

### EACH MONTH

4th Saturday 11am Mass with  
Sacrament of Anointing

### ADORATION

Monday to 6:45am-7:30am  
Friday

Friday 11am-noon

### RECONCILIATION

Monday to 11:30am-noon  
Thursday 12:30pm-1:00pm  
4:30pm-5:00pm

Friday 11:00am-noon  
12:30pm-1:00pm  
4:30pm-5:00pm

Saturday 10:30am-11:00am  
4:00pm-5:00pm



### This Week's Readings

**First Reading** Isaiah 22:19-23  
*I place the key of the House of David upon his shoulder.*

**Second Reading** Rom 11:33-36  
*From him, through him, and in him are all things.*

**Gospel Reading** Matthew 16:13-20  
*You are Peter, to you I will give the keys of the kingdom of heaven.*

### Next Week's Readings

**First Reading** Isaiah 22:19-23

**Psalm** 137

**Second Reading** Rom 11:33-36

**Gospel Reading** Matthew 16:13-20

### Last Sunday's Collection

Total: \$5,256



### Altar Servers Needed

We require more Altar Servers for the 11am Mass. If you are interested please contact the Parish Office or Margaret Clark on 479 2820.

### NZ String Quartet

Join us on our 30th-anniversary tour for a concert filled with passion, yearning, joy and heartache. Each of our two programmes explores themes of love and desire and will take you on an emotional journey through some of the great works of the repertoire. Thursday 7 September in St Mary of the Angels Church at 7.30pm.

Admission: Adult \$45, Seniors \$40, Tertiary Student \$15, School Children \$5

### Mass has been offered for:

**Recently Deceased:** Josefina Rivera Calbay, Jeanette Parker, Fr. Michael Sweere

**Anniversaries:** Patricia Goulter, Eunice Clarke, Brett Gray, Louis Hannan, Brian Stempa

**Prayers for the Sick:** Mary Rose Keller, Geoff Sweet, Dianne Sweet, Margaret Such, Bryce Toimata, Colleen Kennedy, Gil Lescher, Mary Crompton, Jenni Rowell, Teresa Jeong, Dr Peter Brooke, Richard Wright, Losalia Leo, Patricia Smyth, John Foden, Imelda Reeve, Jan Tuinman, John Mora, Maria Kim, Carol Aldridge, Maureen McDonald, Leo Buchanan

*Please remember these and any others in the Parish who are ill. If you know of anyone confined to their home or who needs a visit with Holy Communion, please contact Sister Frances at the Parish Office.*

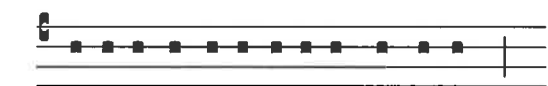
### Responsorial Psalm 137

**R. Lord, your love is eternal; do not forsake the work of your hands.**

I thank you, Lord, with all my heart, you have heard the words of my mouth. Before the angels I will bless you. I will adore before your holy temple. **R.**

I thank you for your faithfulness and love which excel all we ever knew of you. On the day I called, you answered; you increased the strength of my soul. **R.**

The Lord is high yet he looks on the lowly and the haughty he knows from afar. Your love, O Lord, is eternal, discard not the work of your hands. **R.**



Mi-se-ri-cordi- a tu- a in saecu-lum,



ope-ra manu-um tu- a-rum ne despi-ci- as.-

*Thy mercy endureth for ever, O despise not the works of thy hands.*

### Quiet Day with Suzanne Aubert

An invitation to spend a few hours resting and reflecting on an aspect of the life and vision of Suzanne Aubert. Lunch included – please register for catering purposes. Thursday 7 September (10.30am to 2.30pm). Our Lady's Home of Compassion, 2 Rhine Street, Island Bay. Email: retreat@compassion.org.nz or phone 04 383 7769 for enquires.

### Prayer for Synod- 2017

God, whose power is at its best in weakness: You have entrusted us, in our frailty, with the awesome privilege of being your presence in our world. You say to each of us: *Go, you are sent.*

In naming and sending, you honour our ability to serve. Yet we know our need of you, even as we travel in the echo of your voice: *Go, you are sent.*

Bless our Archdiocese of Wellington as we set out and, as you have done for so many, strengthen our weariness; steady our trembling. May we never forget that you are with us and joyfully answer your call: *Go, you are sent.* We go, gifting your mercy, proclaiming your truth, and celebrating your goodness; our words and actions revealing your face to all we meet.

Blessed are you, God of the journey. Amen

### Beethoven: The Piano & Violin Sonatas

Beethoven's ten Sonatas for Violin and Piano present a formidable, unique challenge to violinists and pianists. Michael Houstoun and Bella Hristova fit the requirements exactly. After winning the 2007 International Michael Hill Violin Competition, Bella Hristova has built a reputation as a musician of poise and power. Michael Houstoun's recent performances of Beethoven's complete Piano Sonatas met with huge acclaim for fluency. From 28 August until the 1 September, they will be performing each lunchtime at 12pm in the Michael Fowler Centre. Tickets available at www.ticketek.co.nz.

### 'Current of Grace' Conference

"Celebrating the diverse fruits and family of the Catholic Charismatic Renewal in New Zealand"

On Friday 22 – Sunday 24 September at the Distinction Hotel and the Cathedral of the Holy Spirit, Palmerston North. Guest presenters include Bishop Denis Browne, Fr John Rea, Diana Ingle CCRNZ Chairperson. Ann Brereton from ICCRS will share on 2017 Vatican report Pope Francis's exciting new plans for us all! For further information and to register on-line visit www.ccrnz.org/register2017

### Tertiary Study Scholarships

The Catholic Foundation Scholarships for study in the 2018 tertiary year are now open. Application forms and conditions are available on the Foundation's website.

Completed applications together with supporting documentation should be at the Foundation's office by 01 September – please contact the office if this time frame presents difficulties. Similarly have no hesitation in contacting the writer if you have any questions or queries. For more information and for application forms visit [www.catholicfoundation.org.nz/scholarships.php](http://www.catholicfoundation.org.nz/scholarships.php)

### Holy Hour

You are invited to a Holy Hour on Tuesday 29 August beginning at 7.30 pm in the Cathedral Chapel to pray for vocations to priesthood and consecrated life. This Holy Hour will include prayers, Scripture, times of silence and concluding with Benediction followed by supper.

### Engaged Encounter

Engaged Encounter is a weekend experience for couples intending to be married, 11-12 November. Registrations close 2 weeks before. Presbytery, 301 Karori Road, Karori. For details go to the website at [www.ceewellington.org.nz](http://www.ceewellington.org.nz) or phone Kate & Simon Olsen: (04) 801 6192, or email [simonolsen@gmail.com](mailto:simonolsen@gmail.com)

### Social Justice Week

As a part of Social Justice Week 2017 and in response to Pope Francis' call to weave bonds of belonging in our local communities, Challenge 2000 is running a week of fun and interactive activities for young people, children and young adults. These will take place between Sunday 10<sup>th</sup> – Saturday 16<sup>th</sup> September. All events will be based at 1 Wanaka Street, Johnsonville. To sign up, check out the flyer in the foyer or visit [www.challenge2000.org.nz](http://www.challenge2000.org.nz) for more information, all are welcome.

## ST MARY OF THE ANGELS EARTHQUAKE STRENGTHENING APPEAL

I would like to help preserve St Mary of the Angels Church

Name: \_\_\_\_\_

Address: \_\_\_\_\_

Email: \_\_\_\_\_

Tel: \_\_\_\_\_

My contribution will be made by:

Direct Credit

Cheque

Cash

PLEASE SPECIFY AMOUNT

\$

Donations can be sent to:  
Seismic Strengthening Fund  
St Mary of the Angels  
17 Boulcott St  
Wellington 6011

Bank Account Details:  
02-0536-0003242-23  
Bank of New Zealand  
Lambton Quay  
Wellington

St Mary of the Angels is registered with the Charities Commission. All donations are tax deductible and a receipt issued.

**LTM McGuinness**  
BUILDING CONTRACTORS LIMITED  
9 Francis Place,  
PO Box 9639, Wellington  
Phone (04) 384 8455 Fax (04) 801 8455  
Email: [ltm@mcguinness.co.nz](mailto:ltm@mcguinness.co.nz)

*Little Peckish*  
Cafe  
*Feeling a little peckish?*  
Dukes Arcade · Great food, coffee, service  
Office catering available  
Phone 499 7769 · Mobile 0274 461 650

This newsletter is kindly sponsored by:  
Michael Burrowes  
of Burrowes and Company  
Barristers and Solicitors  
phone (04) 473 7733

**BURROWES**  
and Company  
Barristers and Solicitors