

For Your Diaries : 2016

25 September, Theology on Tap

Join the SMAYACs at 6.30pm, the Arborist, 166 Willis St for great discussion. This month's speaker is Nicola Young.

28 September, Holy Hour

You are invited to a Holy Hour on Tuesday 28 September beginning at 7.30pm in the Cathedral chapel to pray for vocations to priesthood and religious life. This Holy Hour will include prayer, Scripture, times of silence and concluding with Benediction followed by supper.

1 October, Retreat Day with Fr John Rea

Fr John Rea will lead a Retreat Day on the theme of Mercy on Saturday 1st October in the Cathedral of the Sacred Heart. The day will begin at 9.30am with Morning Tea and the first talk begins at 10am. The day will conclude with Mass which will finish around 3.30pm. All are welcome to attend.

6 October, Adoration

Join the SMAYACs for an hour of Adoration and prayer from 6pm in the SMOA Parish Hall.

15 October, Songs from The Heart - Concert

7.30pm, St Brigid's Parish, Feilding. Mezzo-soprano Wendy Kale supported by tenor Kevin O'Kane and accompanied by Sue Alexander will feature a selection of beautiful Sacred Music, duets and songs from the stage, a little Italian jocularly and a nostalgic look back to the war years. The young men from Hato Paora College's Kapa Haka Group will add another flavour to the mix. There will be opportunities throughout for the audience to join in this musical feast. A light supper will follow Wendy's concert.

16 October, Sunday Best - Concert

11am, St Brigid's Parish, Feilding. A smorgasbord of musical treats. 11am. Wendy & Kevin will again be accompanied by Sue and also by our Parish School, St Joseph's, Kapa Haka Group. We envisage this to be a real community event, beginning with 9am Mass, followed by a special morning tea, then the concert. Ticket can be purchased by contacting the Parish Office (06)323 3980 or Steve Morton (06) 323 5194

28 - 30 October, The Lazarus Experience Retreat

A weekend retreat based on Catholic teaching and designed to heal those suffering from a marriage break up. For further information or to register visit: www.wn.catholic.org.nz/lazarus

26-27 November - Engaged Encounter

Registrations close 11th November
Held at Presbytery, 301 Karori Road, Karori, Wellington.

WEST PLAZA HOTEL
LOCATION • COMFORT • STYLE

WEEKEND SPECIAL \$135

One night's stay & cooked breakfast for two

BOOK NOW

**Subject to availability*

westplaza.co.nz / P 0800 731 444

E reservations@westplaza.co.nz

110 Wakefield St, Wellington

This newsletter is kindly sponsored by:

Michael Burrowes
of Burrowes and Company
Barristers and Solicitors
phone (04) 473 7733



Books * DVD's * Statues * Gifts
Rosaries * Missals * Bibles * Music
Teaching * Baptism * Confirmation
First Holy Communion
Bible Study * Advent & Christmas
www.christiansupplies.co.nz

Pleroma
Christian Supplies
Specialists In Catholic Product



Is dealing with a
**Locally Owned
Funeral Director**
important to you?



Wellington
56 Onepu Road, Kilbirnie
Telephone 387-8301
Email: harbour@funeral-link.co.nz
www.harbourcityfunerals.co.nz

A LEGACY OF FAITH



Remembering St Mary of the Angels in your will provides an ideal opportunity to make a statement of your faith and to give resources that will support your Church for years to come. Please contact the Parish Office for further details. Phone (04) 473 8074.

Quality Te Aro Offices

5-7 Vivian Street, Wellington

Great location close to Cafe district
Busy arterial road
Air conditioned
Car parking available

Office suites available at an affordable price. Semi-serviced suites (approx 18sqm) that are fully furnished. There is also a company floor area (approx 200sqm) with 5x partitioned offices, Board room and Meeting room. Shared kitchen and shower facilities. Car parking available in the building at an additional rate.

This is a must see for new businesses on a budget. Earthquake Engineering Evaluation IEP Report NBS 80 %

Contact by e-mail for further information: mariabaldock@gmail.com

The Angelus

St Mary of the Angels Parish

Church and Presbytery
17 Boulcott Street
Wellington Central
Telephone: 04 473 8074
Parish website: www.smoa.org.nz

St Mary of the Angels is a diverse community which seeks to praise and thank God in a place of calm and beauty and strives to be Christ alive in Central Wellington

25 September 2016, 26th Sunday in Ordinary Time

Suzanne Aubert Celebrations Day: 2nd October

Next Sunday we will celebrate the 90 year anniversary of Suzanne Aubert.

Suzanne devoted her life to helping others. Her work of caring for orphan children and for the sick, took her from France to Auckland then to Hawke's Bay, to the Whanganui River and finally to Wellington.

In Wellington she founded a new Catholic order - The Sisters of Compassion, and became actively engaged with the local Māori population. She spoke Māori well, skilfully learned to combined Māori and Pākehā medicine, and wrote books in Māori, English and French adding significantly to a cross cultural understanding and literary heritage.

Through Suzanne's life, she was undeterred by obstacles of lack of resources, and stood firm believing that everyone deserved equal respect. She is a model of faith and compassion to us in this Year of Mercy.

When Suzanne died on the 1st October 1926, many people including Cardinal Gasquet, Cardinal Laurenti and Cardinal van Rossum were already acclaiming her a saint. Her goodness and holiness were acknowledged by people from all walks of life and the Sisters of Compassion were encouraged to collect all relevant information about her life and virtues.

Her funeral took place in the present St Mary of the Angels Church and it was reported that the congregation was so large it overflowed into Boulcott St. Condolences and tributes poured in from around the world.

In this week leading up to her celebration day, we are encouraged to read and reflect on her works of mercy and compassion. There is a rich archive of information available at: www.suzanneaubert.co.nz and several resources published by the Sisters of Compassion.

Please continue to pray Suzanne Aubert's mission which lives on today through the faithful work of the Sister of Compassion.



Suzanne Aubert painted by Kapiti-based artist, Elspeth Shannon. The painting was commissioned and gifted to the Home of Compassion Island Bay in 2015

MASS TIMES

Sunday

7am *St Mary of the Angels Parish Hall*
9am *Sacred Heart Cathedral*
12pm *St John's Presbyterian Church*
5pm *St Joseph's Church, Mt Victoria*

Monday to Friday

St Mary of the Angels Parish Hall
7:30am, 12:05pm & 5:15pm

Saturday

11am *St Mary of the Angels Parish Hall*

SACRAMENT OF ANOINTING

St Mary of the Angels Parish Hall
11am Mass 4th Saturday of each month

ADORATION

St Mary of the Angels Parish Hall
Monday to Friday 6:45am - 7:30am
Friday 11:00am - 12:00pm

RECONCILIATION

St Mary of the Angels Presbytery
Monday to Thursday 11:30am - 12:00pm
12:30pm - 1:00pm
4:30pm - 5:00pm

Friday

11:00am - 12:00pm
12:30pm - 1:00pm
4:30pm - 5:00pm

Saturday

10:30am - 11:00am
4:00pm - 5:00pm

Parish Priest

Fr Barry Scannell SM
smoapp@xtra.co.nz

Assistant Priest

Fr Carl Telford SM

Adult Education

Fr Michael Young SM

Pastoral Worker

Sr Frances Gibbs CSB

Director of Music

Robert Oliver
robert.oliver@paradise.net.nz

Parish Accountant

Jeanette Temelo
smoamanager@xtra.co.nz

Parish Office

smoaoffice@xtra.co.nz

This Week's Readings

First Reading Amos 6:1, 4-7
You who give yourself licentiousness and revelry will be exiled.

Second Reading 1 Tim 6:11-16
Obeys the commandments until the coming of the Lord.

Gospel Reading Luke 16:19-31
During your life good things came your way just as bad things came the way of Lazarus. Now he is being comforted while you are in agony.

Next Week's Readings

First Reading Hab 1:2-3; 2:2-4
Psalm 94
Second Reading 2 Tim 1:6-8, 13-14
Gospel Reading Luke 17:5-19

Planned Giving

If you would like to join the St Mary of the Angels Planned Giving Scheme please contact the Parish Office. A tax rebate of 33.3% may be claimed on all your contributions.

Last Sunday's Collection

Total: \$4,347



Study Catholic Theology

Applications are invited to study for a Bachelor of Theology or Graduate Diploma in Theology during 2017 at Good Shepherd College, Auckland, by distance or on campus. Email admin@gsc.ac.nz or Ph: (09) 3611053.



Mass has been offered for:

Recently Deceased: Mary Dysart, Alice Willstrop, Mario Passuello, Fr Lou Leuthard, Judy Blair, Will Openshaw

Anniversaries: Freda Fernie, Fr John Aitken sm, Pepe Va'a, Mary Chinnock, Betty Mary Compton, Mary Frawley, Anthea Walters, Breda Smith, Zoe Moriarty, Norma Burns

Prayers for the Sick: Joseph Glowacz, Jeanette Parker, Teresa Jeong, Dr Peter Brooke, Patricia McGreevy, Clem Cull, Fr Fred Bliss sm, Maureen Ayling, Paul Barber, Richard Wright, Losalia Leo, Maureen McDonald, Patricia Smyth, John Foden, Joanna Veltman, Imelda Reeve, Jan Tuinman, Kathleen Phelan.



Please remember these and any others in the Parish who are ill. If you know of anyone confined to their home or who needs a visit with Holy Communion, please contact Sister Frances at the Parish Office.

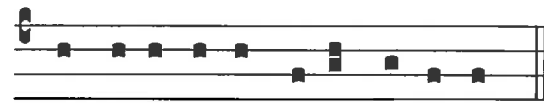
Responsorial Psalm 145

R. Praise the Lord, my soul!

It is the Lord who keeps faith for ever, who is just to those who are oppressed. It is he who gives bread to the hungry, the Lord, who sets prisoners free. **R**

It is the Lord who gives sight to the blind, who raises up those who are bowed down. It is the Lord who loves the just, the Lord, who protects the stranger. **R**

He upholds the widow and orphan but thwarts the path of the wicked. The Lord will reign for ever, Zion's God, from age to age. **R**



Lauda a-nima me- a Domi-num.

Praise the Lord O my soul.

Greenstone Doors Board of Trustees

Greenstone Doors are inviting expressions of interest for positions on our Board of Trustees. If you have 2-3 hours to offer monthly and can attend trustee meetings on the 1st Saturday of each month, please contact Suzanne O'Rourke on 021 549528 or info@greenstonedoors.co.nz

Greenstone Doors Charitable Trust is a Christian organisation working to support families through pregnancy and beyond in the Hutt Valley. Our free services include pregnancy testing, counselling, baby clothing, advocacy, and support groups.



Greenstone Doors Charitable Trust

Prayer for Seismic Strengthening Work

Gracious God, Creator of the Universe, you made us in your own image and likeness.

You gave us wisdom and understanding, grateful hearts and creative minds.

We pray that our beautiful Church will be strengthened against the peril of earthquake through the generosity of parishioners, the community of Wellington and people throughout New Zealand.

We ask, Lord, that you abundantly bless those who have already donated funds, skill and expertise to this project.

May St Mary of the Angels Church be a symbol of a unified community that will gather to praise and thank you.

Mary our Mother, pray for us.

Marriage Encounter Retreat

Marriage Encounter are running an enrichment weekend for married couples. A Marriage Encounter weekend is specifically designed to equip couples with the tools to enhance their relationship and make it even better than it was on their wedding day!

Retreat date: 7 – 9 October 2016. Masters Hall, SH2, Pahiatua. Ph. 0800 362 686 for bookings and more info.

Hearts Aflame Summer Camp

Hearts Aflame is a ten day Catholic summer school that is open to young adults aged 18 to 35. It is a place of learning about the Catholic faith, with daily lectures and teaching sessions on official Church teaching and Catholic spirituality. Previous Hearts Aflame summer schools have featured teaching on issues such as moral theology, philosophy, apologetics, sexuality, pro-life issues, prayer, Scripture, Church history, marriage, vocations, Theology of the Body, Eucharistic theology, lives of the Saints, Divine Mercy, bio-ethics, true feminism, the role of the laity, covenantal theology, liturgy – just to name a few.

Visit www.heartsaflame.org.nz for more info and to register!

St Mary of the Angels Young Adults Group (SMAYACs)

If you are a new or returning student or young adult to Wellington, you are very welcome to join the St Mary of the Angels Young Adults Group.

Every first and third Thursday of the month we meet in the Parish Hall, after the 5.15pm Mass. On the first Thursday we have Exposition of the Blessed Sacrament and on the third Thursday we reflect on the Gospel for the following Sunday. You are very welcome to join in both of these events and afterwards, we go downtown for something to eat.

Theology on Tap: Tonight! Sunday, 25 September, 6.30pm, the Arborist, 166 Willis St. This month our speaker is Nicola Young (Wellington City Councillor) who will present on the challenge facing Wellington to earthquake strengthen many of our heritage buildings - including St Mary of the Angels Church and Erskine College. Nicola's family history is intertwined with our church dating back to the wedding of her paternal great-grandparents in 1878! Nicola will also be happy to speak about other issues currently facing Wellington. All are welcome and free snacks are provided.

Brother Ambrose Golf Club

St Bernard's College Old Boys Association are calling for registrations for the 2016 annual Brother Ambrose Golf Cup. Friday October 14th from noon at Wainuiomata Golf Club. Visit the Old Boys Facebook page SBC Old Boys to access forms or call Dominic Outtrim or Vicki Foss at the College for more information on 560 9250. It is not necessary to be an Old Boy to play or enter a team. Parents of current students and others are very welcome.

Retreat Day

Fr John Rea is offering to conduct a Retreat Day on the theme of Mercy on Saturday 1st October in the Cathedral of the Sacred Heart. The day will begin at 9.30am with Morning Tea and the first talk begins at 10am The day will conclude with Mass which will finish around 3.30pm. All are welcome to attend. This is another chance to reflect in a retreat atmosphere on this Year of Mercy.

ST MARY OF THE ANGELS EARTHQUAKE STRENGTHENING APPEAL



I would like to help preserve St Mary of the Angels Church

Name: _____

Address: _____

Email: _____ Tel: _____

My contribution will be made by:

Direct Credit

Cheque *PLEASE SPECIFY AMOUNT*

Cash \$ _____

Donations can be sent to: Seismic Strengthening Fund St Mary of the Angels 17 Boulcott St Wellington 6011

Bank Account Details: 02-0536-0003242-23 Bank of New Zealand Lambton Quay Wellington

St Mary of the Angels is registered with the Charities Commission. All donations are tax deductible and a receipt issued.

LT M^cGuinness BUILDING CONTRACTORS
9 Francis Place,
PO Box 9639, Wellington
Phone (04) 384 8455 Fax (04) 801 8455
Email: ltm@mcguinness.co.nz

Little Peckish Cafe
Feeling a little peckish?
Dukes Arcade · Great food, coffee, service
Office catering available
Phone 499 7769 · Mobile 0274 461 650

NEW WORLD WELLINGTON CITY
279 WAKEFIELD ST.
OPEN 7 DAYS | 7AM - MIDNIGHT
WWW.WGTNCITYNEWORLD.CO.NZ