

## For Your Diaries : 2016

### 21st July - SMAYACs Prayer Group

All are welcome to join the SMAYACs for Prayer Group following the 5.15pm Mass on Thursday 21st July. SMOA Parish Hall.

### 24th July, A Mountain of Mercy

Cathedral Piazza 2-3pm. Further information from Lorraine McArthur 4961796

### 29-21 July, Dove Retreat

Come away to be refreshed and renewed - Dove Catholic Fellowship for Women invites all women to a retreat weekend with guest speakers Phil and Jennie Ryall from Australia. Jennie a trained counsellor and spiritual companion for many women carries a strong heart for people to find breakthrough into the freedom of God's goodness. Phil and Jennie are leaders for the Disciples of Jesus Community in Australia. Theme: "Never Thirst Again" Venue: Willow Park Christian Camp, Eastern Beach Auckland. For registration and further information visit our website [www.dove.org.nz](http://www.dove.org.nz) or contact Shona Williams on 07 543 0101 email [shonawilliams58@gmail.com](mailto:shonawilliams58@gmail.com). An option of residential or day registrations is available. [www.dove.org.nz](http://www.dove.org.nz)

### 30 July Joshua One Day Retreat

between 8:30 and 5pm at Home of Compassion, Island Bay.

### 31 July Theology on Tap

Join the St Mary of the Angels Young Adult Group for Theology on Tap. Details of this month's speaker in next week's Angelus.

### 1-4 August - Grease

St Patrick's College Hall 7pm. Book through the College Office or online at [www.stpats.school.nz](http://www.stpats.school.nz).

### 30th August at 7.15pm RCIA Introductory Evening

7.15pm in the Parish Hall. If you would like more information or wish to enrol please contact the Parish Office 473 8074 or email: [smoaoffice@xtra.co.nz](mailto:smoaoffice@xtra.co.nz)

TO KEEP UP TO DATE WITH EVENTS AROUND THE ARCHDIOCESE VISIT [WWW.WN.CATHOLIC.ORG.NZ](http://WWW.WN.CATHOLIC.ORG.NZ)

**WEST PLAZA HOTEL**  
LOCATION • COMFORT • STYLE

**WEEKEND SPECIAL \$135**

One night's stay & cooked breakfast for two

**BOOK NOW**

\*Subject to availability

[westplaza.co.nz](http://westplaza.co.nz) / P 0800 731 444

E [reservations@westplaza.co.nz](mailto:reservations@westplaza.co.nz)

110 Wakefield St, Wellington

This newsletter is kindly sponsored by:

**Michael Burrowes**  
of Burrowes and Company  
Barristers and Solicitors  
phone (04) 473 7733

**BURROWES**  
and Company

Barristers and Solicitors

**Books \* DVD's \* Statues \* Gifts**  
**Rosaries \* Missals \* Bibles \* Music**  
**Teaching \* Baptism \* Confirmation**  
**First Holy Communion**  
**Bible Study \* Advent & Christmas**

[www.christiansupplies.co.nz](http://www.christiansupplies.co.nz)

**Pleroma**  
**Christian Supplies**  
Specialists In Catholic Product



Is dealing with a  
**Locally Owned  
Funeral Director**  
important to you?



Wellington  
56 Onepu Road, Kilbirnie  
Telephone 387-8301  
Email: [harbour@funeral-link.co.nz](mailto:harbour@funeral-link.co.nz)  
[www.harbourcityfunerals.co.nz](http://www.harbourcityfunerals.co.nz)

## A LEGACY OF FAITH



Remembering St Mary of the Angels in your will provides an ideal opportunity to make a statement of your faith and to give resources that will support your Church for years to come. Please contact the Parish Office for further details. Phone (04) 473 8074.

## Quality Te Aro Offices

5-7 Vivian Street, Wellington

Great location close to Cafe district  
Busy arterial road  
Air conditioned  
Car parking available

Office suites available at an affordable price. Semi-serviced suites (approx 18sqm) that are fully furnished. There is also a company floor area (approx 200sqm) with 5x partitioned offices, Board room and Meeting room. Shared kitchen and shower facilities. Car parking available in the building at an additional rate.

This is a must see for new businesses on a budget. Earthquake Engineering Evaluation IEP Report NBS 80 %

Contact by e-mail for further information: [mariabaldock@gmail.com](mailto:mariabaldock@gmail.com)

# The Angelus

## St Mary of the Angels Parish

Church and Presbytery  
17 Boulcott Street  
Wellington Central  
Telephone: 04 473 8074  
Parish website: [www.smoa.org.nz](http://www.smoa.org.nz)

*St Mary of the Angels is a diverse community which seeks to praise and thank God in a place of calm and beauty and strives to be Christ alive in Central Wellington*

### MASS TIMES

#### Sunday

7am *St Mary of the Angels Parish Hall*  
9am *Sacred Heart Cathedral*  
12pm *St John's Presbyterian Church*  
5pm *St Joseph's Church, Mt Victoria*

#### Monday to Friday

*St Mary of the Angels Parish Hall*  
7:30am, 12:05pm & 5:15pm

#### Saturday

11am *St Mary of the Angels Parish Hall*

#### SACRAMENT OF ANOINTING

*St Mary of the Angels Parish Hall*  
11am Mass 4th Saturday of each month

#### ADORATION

*St Mary of the Angels Parish Hall*  
Monday to Friday 6:45am - 7:30am  
Friday 11:00am-12:00pm

#### RECONCILIATION

*St Mary of the Angels Presbytery*  
Monday to Thursday 11:30am-12:00pm  
12:30pm - 1:00pm  
4:30pm - 5:00pm

#### Friday

11:00am-12:00pm  
12:30pm - 1:00pm  
4:30pm - 5:00pm

#### Saturday

10:30am-11:00am  
4:00pm - 5:00pm

#### Parish Priest

Fr Barry Scannell SM  
[smoapp@xtra.co.nz](mailto:smoapp@xtra.co.nz)

#### Assistant Priest

Fr Carl Telford SM

#### Adult Education

Fr Michael Young SM

#### Pastoral Worker

Sr Frances Gibbs CSB

#### Director of Music

Robert Oliver  
[robert.oliver@paradise.net.nz](mailto:robert.oliver@paradise.net.nz)

#### Parish Accountant

Jeanette Temelo  
[smoamanager@xtra.co.nz](mailto:smoamanager@xtra.co.nz)

#### Parish Office

[smoaoffice@xtra.co.nz](mailto:smoaoffice@xtra.co.nz)

## 17 July 2016, 16th Sunday in Ordinary Time Year C

### A Mountain of Mercy

The Archdiocesan Year of Mercy Committee recently spoke about the severity of the cold months ahead and thought about an initiative for the Year of Mercy related to warmth, particularly for our poor and vulnerable for whom this time of year is particularly difficult. I ask all parishes to encourage their parishioners to donate new shoes or socks for distribution to our low decile schools for children and students who regularly arrive with neither. Principals tells us that that can be anything up to 10% of their school rolls. Warm feet are something we all take for granted. But it is simply not a reality for all. Let our compassion be with those who are all too often innocent victims of family poverty.

Come and build a mountain of mercy! Please bring them to the Cathedral Piazza on Sunday 24 July, 2pm – 3pm. You may also leave them at the parish office or in a box in the foyer of the church. For further information, please contact Lorraine McArthur on 496 1796.



Cardinal John Dew

**This Week's Readings**

**First Reading** Genesis 18:1-10  
*Lord, do not bypass your servant*

**Second Reading** Colossians 1:24-28  
*The mystery hidden for centuries has now been revealed to his saints*

**Gospel Reading** Luke 10:38-42  
*Martha took up the duties in the house. Mary chose the better part*

**Next Week's Readings**

**First Reading** Genesis 18:20-32

**Psalm** 137

**Second Reading** Colossians 2:12-14

**Gospel Reading** Luke 11:1-13

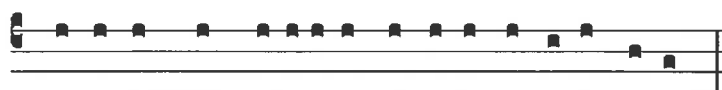
**Responsorial Psalm 14**

**R. The just will live in the presence of the Lord**

Lord, who shall dwell on your holy mountain?  
He who walks without fault;  
He who acts with justice  
And speaks the truth from his heart;  
He who does not slander with his tongue. **R**

He who does not wrong to his brother,  
who casts no slur on his neighbour,  
who holds the godless in disdain,  
but honours those who fear the Lord.. **R**

He who keeps his pledge, come what may;  
who takes no interest on a loan  
And accepts no bribes against the innocent.  
Such a man will stand firm for ever. **R**



Dómine, quis habitábit in taberná-cu-lo tu-o?

O Lord, who shall dwell in Thy tabernacle?

**Last Sunday's Collection**

**Total: \$5,114**



**Joshua Wellington invites men to**

1. **One-Day Retreat** on Saturday 30 July between 8:30 to 5pm at Home of Compassion, Island Bay. Theme: "Jesus and me... our journey" Retreat Leader: Fr John Walls s.m. Bring some lunch to share.

2. **Monthly meeting** on Thursday 21st July at 7:30pm in Connolly Hall, Guildford Terrace, Thorndon (behind Sacred Heart Cathedral)

Want to know more? Ring John Taylor (04) 389-8915 or 021-107-8538 or email: [injntaylor@paradise.net.nz](mailto:injntaylor@paradise.net.nz)

**Mass has been offered for:**

**Recently Deceased:** Ron Finlayson, Sr Lucia Power CSB

**Anniversaries:** Bill Young, David Lemon, Maria Streetland, Toni Brennan, Peter Schmidt, Thomas O'Shaughnessy, Veronica Nolan.

**Prayers for the Sick:** Patricia McGreevy, Fr Michael Sullivan sm, Clem Cull, Fr Fred Bliss sm, Maureen Ayling, Bill Prior, Paul Barber, Richard Wright, Losalia Leo, Maureen McDonald, Patricia Smyth, John Foden, Joanna Veltman, Imelda Reeve, Jan Tuinman, Kathleen Phelan.



*Please remember in your prayers, these and the other sick of the Parish. If you know of anyone who is confined to their home or who needs a visit with Holy Communion, please contact Sister Frances at the Parish Office.*

**Prayer for Seismic Strengthening Work**

Gracious God, Creator of the Universe, you made us in your own image and likeness.

You gave us wisdom and understanding, grateful hearts and creative minds.

We pray that our beautiful Church will be strengthened against the peril of earthquake through the generosity of parishioners, the community of Wellington and people throughout New Zealand.

We ask, Lord, that you abundantly bless those who have already donated funds, skill and expertise to this project.

May St Mary of the Angels Church be a symbol of a unified community that will gather to praise and thank you.

Mary our Mother, pray for us.

**Come away to be refreshed and renewed - Dove Retreat 29 - 31 July**

Dove Catholic Fellowship for Women invites all women to a retreat weekend with guest speakers Phil and Jennie Ryall from Australia. Jennie a trained counsellor and spiritual companion for many women carries a strong heart for people to find breakthrough into the freedom of God's goodness. Phil and Jennie are leaders for the Disciples of Jesus Community in Australia.

**Theme: "Never Thirst Again"**

**Venue: Willow Park Christian Camp, Eastern Beach Auckland**

For registration and further information visit our website [www.dove.org.nz](http://www.dove.org.nz) or contact Shona Williams on 07 543 0101 email [shonawilliams58@gmail.com](mailto:shonawilliams58@gmail.com). An option of residential or day registrations is available.

**The St Vincent de Paul Society's** next meeting is on Tuesday July 19th in the Presbytery at 6pm. New members always welcome.

**St Mary of the Angels Young Adults Group (SMAYACs)**

You are very welcome to join the St Mary of the Angels Young Adults Group.

**Upcoming Events**

**21st July** - Prayer Group reflecting on the Gospel for the following Sunday. Following 5.15pm Mass in SMOA Parish Hall.

**31st July Theology on Tap**

Theology on tap is held on the last Sunday of the month following the 5.15 Mass. Details of this month's speaker in next week's newsletter.

You are very welcome to join us for these events and afterwards, when we go downtown for something to eat and drink.

**Adult Rite of Christian Initiation (RCIA)**

Perhaps you know someone who is curious about the Catholic Faith? The Adult Rite of Christian Initiation (RCIA) is the process through which adults are gradually introduced to the Catholic faith and way of life.

St Mary of the Angels is holding an introductory evening on **Tuesday 30th August at 7.15pm in the Parish Hall**. If you would like more information or wish to enrol please contact the Parish Office 473 8074 or email: [smoaoffice@xtra.co.nz](mailto:smoaoffice@xtra.co.nz)

Parishioners, please invite someone whom you know to be interested in our Catholic Faith and pray for the RCIA Candidates, Sponsors, and Leaders.

**GREASE**

The St Patrick's College production for 2016 is that iconic picture of the 1950's - *Grease*

**Grease: 7pm 1-4 August, St Patrick's College Hall**

Tickets \$25 for adults, \$20 for students / children.

Tickets can be purchased through the College office or online through the College website:

[www.stpats.school.nz](http://www.stpats.school.nz). Please note that online bookings will incur a credit card fee.

*Rydell High is waiting...*

**L.T. McGuinness LIMITED**  
BUILDING CONTRACTORS  
9 Francis Place.  
PO Box 9639, Wellington  
Phone (04) 384 8455 Fax (04) 801 8455  
Email: [ltm@mcguinness.co.nz](mailto:ltm@mcguinness.co.nz)

**Little Peckish Cafe**  
Feeling a little peckish?  
Dukes Arcade · Great food, coffee, service  
Office catering available  
Phone 499 7769 · Mobile 0274 461 650

**NEW WORLD WELLINGTON CITY**  
279 WAKEFIELD ST.  
OPEN 7 DAYS | 7AM - MIDNIGHT  
[WWW.WGTNCITYNEWORLD.CO.NZ](http://WWW.WGTNCITYNEWORLD.CO.NZ)

**ST MARY OF THE ANGELS EARTHQUAKE STRENGTHENING APPEAL**

I would like to help preserve St Mary of the Angels Church

Name: \_\_\_\_\_

Address: \_\_\_\_\_

Email: \_\_\_\_\_ Tel: \_\_\_\_\_

My contribution will be made by:

Direct Credit

Cheque *PLEASE SPECIFY AMOUNT*

Cash \$ \_\_\_\_\_

Donations can be sent to: Seismic Strengthening Fund  
St Mary of the Angels  
17 Boulcott St  
Wellington 6011

Bank Account Details:  
02-0536-0003242-23  
Bank of New Zealand  
Lambton Quay  
Wellington

St Mary of the Angels is registered with the Charities Commission. All donations are tax deductible and a receipt issued.