

## For Your Diaries : 2017

### May & June, Host a Hospice Cuppa

Support Mary Potter Hospice by hosting a Hospice Cuppa this May & June! Sign up by contacting Brooke at [brooke.singer@marypotter.org.nz](mailto:brooke.singer@marypotter.org.nz) or phone 04 381 0465. Alternatively register your interest on [www.hospicecuppa.co.nz/register.asp](http://www.hospicecuppa.co.nz/register.asp).

### 4 June, Ablaze 2017

Celebrate 50 years of Charismatic Renewal! Pentecost Sunday 4th June, 2 - 4pm at St Joseph's Church, Mt Victoria.

### 8 June, Catholic Faith Documentary Viewing, Episode Two

The SMAYAC's are inviting you to come experience Bishop Robert Barron's epic documentary series on the Catholic Faith. It will be held in the St Marys Parish Hall every Thursday from 6-7pm (excluding 1 June for Adoration). Invite someone to come along!

### 10 June, Sonnets and Sweet Ayres at Te Ngakau Tapu

It is a repeat of the programme presented last year in St Joseph's Hiruharama to a capacity audience and a standing ovation. A DVD of that performance is available for sale. 2pm-4pm, Te Ngakau Tapu, 20 Kenepuru Drive, Porirua.

### 11 June, St Patrick's College Wellington Open Day

1.30pm in the Hall. St Patrick's College, 581 Evans Bay Parade, Kilbirnie. Phone 939 3070 or email: [admin@spats.school.nz](mailto:admin@spats.school.nz) for enquires.

### 22 June, Catholic Lawyers

The St Thomas More Society is holding its annual Mass in the Sacred Heart Cathedral Chapel at 5.45pm, All Catholic lawyers and law students are invited to attend. Anyone interested please email [pam.churchman@barristerscomm.com](mailto:pam.churchman@barristerscomm.com) or phone Pam on 914 1050 by 15 June for further details.

### 22-23 July, Engaged Encounter

A weekend experience for couples intending to be married. Remaining weekends for 2017 are 22-23 July and 11-12 November. St Teresa's Presbytery, 301 Karori Road, Karori, Wellington. For more details go to [www.ceewellington.org.nz](http://www.ceewellington.org.nz). Phone Kate & Simon Olsen on 04 801 6192, or email [simonolsen@gmail.com](mailto:simonolsen@gmail.com).

### August Winter Film Series "Called Beyond Ourselves"

5 Evenings, 7.00pm-9.30pm. Places available for the Wednesday night screening 9, 16, 23, 30 August & 6 September and the Thursday night screenings 10, 17, 24, 31 August & 7 September. Kōha.

### 14-18 August, "Companions on the Journey"

Non Residential Guided retreat held at Pā Maria Marist Spirituality Centre, 78 Hobson Street, Thorndon. 9.30am-4pm each day. Cost is \$200. For more information or to register contact Fr Brian Cummings sm, 04 212 4691, 021 703 580 or email [bgcummings@xtra.co.nz](mailto:bgcummings@xtra.co.nz).

### 17-19 September, Archdiocesan Synod

Please keep in your prayer the upcoming Archdiocesan Synod, this is an important event in the Archdiocese.

# Pleroma

Books \* DVD's \* Statues \* Gifts  
Rosaries \* Missals \* Bibles \* Music  
Teaching \* Baptism \* Confirmation  
First Holy Communion  
Bible Study \* Advent & Christmas

## Christian Supplies

Specialists In Catholic Product [www.christiansupplies.co.nz](http://www.christiansupplies.co.nz)



# NEW WORLD

## Wellington City

Open 7 days 7am - 11pm

279 Wakefield Street. Ph 04 384 8054

[www.newworld.co.nz/wellingtoncity](http://www.newworld.co.nz/wellingtoncity)



Locally Owned Funeral Directors  
Caring in our Community

Is dealing with a  
**Locally Owned  
Funeral Director**  
important to you?

**Harbour City**  
FUNERAL HOME

Wellington  
56 Onepu Road, Kilbirnie  
Telephone 387-8301  
Email: [harbour@funeral-link.co.nz](mailto:harbour@funeral-link.co.nz)  
[www.harbourcityfunerals.co.nz](http://www.harbourcityfunerals.co.nz)

## A LEGACY OF FAITH



Remembering St Mary of the Angels in your will provides an ideal opportunity to make a statement of your faith and to give resources that will support your Church for years to come.

Please contact the Parish Office for further details.  
Phone (04) 473 8074.

## Quality Te Aro Offices

5-7 Vivian Street, Wellington

Great location close to Cafe district  
Busy arterial road  
Air conditioned  
Car parking available

Office suites available at an affordable price. Semi-serviced suites (approx 18sqm) that are fully furnished. There is also a company floor area (approx 200sqm) with 5x partitioned offices, Board room and Meeting room. Shared kitchen and shower facilities. Car parking available in the building at an additional rate.

This is a must see for new businesses on a budget. Earthquake Engineering Evaluation IEP Report NBS 80%.

Contact by e-mail for further information:  
[mariabaldock@gmail.com](mailto:mariabaldock@gmail.com)

# The Angelus

## St Mary of the Angels Parish

Church and Presbytery:  
17 Boulcott Street,  
Wellington Central  
Telephone: 473 8074  
Parish website: [www.smoa.org.nz](http://www.smoa.org.nz)

*St Mary of the Angels is a diverse community which seeks to praise and thank God in a place of calm and beauty and strives to be Christ alive in Central Wellington*

## 4 June 2017, Pentecost Sunday

### Pentecost Vespers

For many years it has been a tradition that we join with St John's Presbyterian Church and St Peter's Anglican Church for a combined Pentecost liturgy. Each parish takes it in turn to host this important ecumenical event.

This year St Peter's will host us and it is important that St Mary of the Angels is well represented. The Choir's of our three parishes lead the singing and it is a beautiful way in which to symbolize the closeness of our three communities in the inner city.

I hope many parishioners of St Mary of the Angels will make an effort and attend this Pentecost Vespers tonight, **4 June at 7.45pm** at St Peter's Anglican Church on the corner of Willis and Ghuznee Street.

### Catholic Faith Documentary Viewing

The SMAYAC's invite you to watch the second instalment of the documentary series on the Catholic Faith this Thursday 8 June from 6-7pm in the St Mary's Parish Hall. This week's episode is titled "Happy are We: The Teachings of Jesus" Please come along and invite someone to come with you.

The revelation of Jesus as God is accompanied by a stunning invitation to a unique new way of life, explained in the teachings of Jesus. To every generation, the words of Jesus have proven fascinating, disorienting, sometimes confounding, deeply transformative, and always unforgettable. Bishop Barron highlights the Beatitudes, the path of non-violence and lessons of forgiveness, care for the poor and our relationship with God as presented in the parables. Jesus' teachings are illuminated during Bishop Barron's pilgrimages to Poland, Germany, Spain and New York City. Commentaries at these sites also show how the Catholic Church is a living culture, which gives witness to the inviolable dignity of the human person.

### Queens Birthday

Tomorrow is the Queens Birthday holiday and there will be only one Mass at 9am.

*Father Barry Scannell s.m.*  
*Parish Priest*

### Parish Priest

Fr Barry Scannell SM  
[smoapp@xtra.co.nz](mailto:smoapp@xtra.co.nz)

### Assistant Priests

Fr Kevin Conroy SM  
Fr Joe Savesi SM  
Fr John Allardyce SM

### Pastoral Worker

Sr Frances Gibbs CSB

### Director of Music

Robert Oliver  
[robert.oliver@paradise.net.nz](mailto:robert.oliver@paradise.net.nz)

### Parish Accountant

Jeanette Temelo  
[smoamanager@xtra.co.nz](mailto:smoamanager@xtra.co.nz)

### Parish Office

[smoaooffice@xtra.co.nz](mailto:smoaooffice@xtra.co.nz)

### MASSES

*Sunday* 7am, 9am, 11am, 5pm  
*Monday to Friday* 7:30am, 12:05pm, & 5:15pm  
*Saturday* 11am

### EACH MONTH

*4th Saturday* 11am Mass with Sacrament of Anointing

### ADORATION

*Monday to Friday* 6:45am-7:30am  
*Friday* 11am-noon

### RECONCILIATION

*Monday to Thursday* 11:30am-noon  
12:30pm-1:00pm  
4:30pm-5:00pm  
*Friday* 11:00am-noon  
12:30pm-1:00pm  
4:30pm-5:00pm  
*Saturday* 10:30am-11:00am  
4:00pm-5:00pm



### This Week's Readings

**First Reading** Acts 2:1-11  
*They were all filled with the Holy Spirit and began to speak different languages.*

**Second Reading** 1 Cor 12:3-7, 12-13  
*In the one Spirit we were all baptised, making one body.*

**Gospel Reading** John 20:19-23  
*As the Father sent me, so I send you: Receive the Holy Spirit.*

### Next Week's Readings

**First Reading** Ex 34:4-6, 8-9  
**Psalm** Dan 3:52-56

**Second Reading** 2 Cor 13:11-13  
**Gospel Reading** John 3:16-18

### Last Sunday's Collection

Total: \$5,266



### Sonnets and Sweet Ayres

Jerusalem Sonnets by James K Baxter, read by Fr Colin Durning. Music for consort of viols by Purcell, Locke, Gibbons, Philips, Hume and Lupo, played by Palliser Viols (led by Robert Oliver) Saturday June 10th, 2:00pm Te Ngakau Tapu, 20 Kenepuru Drive, Porirua.

### St Patrick's College Wellington Open Day

Prospective pupils and parents are invited to visit the College next Sunday 11 June at 1.30pm. The Rector, Mr Neil Swindells, will address visitors in the Hall. Then there will be an opportunity to tour the College. Any enquires telephone 939 3070 or email admin@spats.school.nz for enquires.

### Mass has been offered for:

**Recently Deceased:** Fr Terry Fitzpatrick sm, Noel Hourihan

**Anniversaries:** Claire Abbott, Lindsay Haas, Kevin Reeve, Fr John O'Dowd sm, Peter Gilbert, Hilary Proctor, Joanna Heemskerck, Nola Griffin, Marie Robinson, Su-Yen Bok, Anthony Mathai, Angela Usita

**Prayers for the Sick:** Margaret Such, De Luna Maxima, Bryce Toimata, Colleen Kennedy, Gil Lescher, Mary Crompton, Jenni Rowell, Jeanette Parker, Teresa Jeong, Dr Peter Brooke, Clem Cull, Fr Kevin O'Donoghue sm, Maureen Ayling, Richard Wright, Losalia Leo, Patricia Smyth, John Foden, Imelda Reeve, Jan Tuinman, Kathleen Phelan, John Mora, Maria Kim, Carol Aldridge, Maureen McDonald



Please remember these and any others in the Parish who are ill. If you know of anyone confined to their home or who needs a visit with Holy Communion, please contact Sister Frances at the Parish Office.

**L.T. M<sup>c</sup>Guinness LIMITED**  
 BUILDING CONTRACTORS

9 Francis Place,  
 PO Box 9639, Wellington  
 Phone (04) 384 8455 Fax (04) 801 8455  
 Email: ltm@mcguinness.co.nz

**Little Peckish Cafe**

Feeling a little peckish?

Dukes Arcade · Great food, coffee, service  
 Office catering available  
 Phone 499 7769 · Mobile 0274 461 650

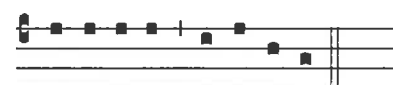
### Responsorial Psalm 103

**R. Lord, send out your Spirit and renew the face of the earth.**

Bless the Lord, my soul!  
 Lord God, how great you are,  
 How many are your works, O Lord!  
 The earth is full of your riches. **R**

You take back your Spirit, they die,  
 returning to the dust from which they came.  
 You send forth your spirit, they are created;  
 and you renew the face of the earth. **R**

May the glory of the Lord last forever!  
 May the Lord rejoice in his works!  
 May my thoughts be pleasing to him.  
 I find my joy in the Lord. **R**



Alle-lu-a, Alle-lu-ia.

*Alleluia, Alleluia*

### Joshua Catholic Men's Fellowship Wellington

Come along and join us on Thursday 15th of June 2017 at 7:30pm for fellowship and prayer in Connolly Hall, Guildford Terrace, Thorndon (behind Sacred Heart Cathedral). Speaker: Pauline Griffiths, a clinical psychologist on "How have I responded to influences received from my parents" If you want to know more phone John Taylor (04) 389-8915 or 021-107-8538 or email jnjtaylor@paradise.net.nz.

### Prayer for Synod- 2017

God, whose power is at its best in weakness:  
 You have entrusted us, in our frailty,  
 with the awesome privilege  
 of being your presence in our world.  
 You say to each of us: *Go, you are sent.*

In naming and sending,  
 you honour our ability to serve.  
 Yet we know our need of you,  
 even as we travel in the  
 echo of your voice: *Go, you are sent.*

Bless our Archdiocese of Wellington as we set out  
 and, as you have done for so many,  
 strengthen our weariness; steady our trembling.  
 May we never forget that you are with us  
 and joyfully answer your call: *Go, you are sent.*

We go, gifting your mercy, proclaiming your truth,  
 and celebrating your goodness;  
 our words and actions  
 revealing your face  
 to all we meet.

Blessed are you, God of the journey. Amen

### Vinnies is rounding up the team!

Our upcoming Street Day Appeal is on Friday 16 June. If you are available for 1-2 hours to be a collector (in particular the city precinct) please contact Ana at community@vinnieswgtm.org.nz.

Alternatively we have Parish conference presidents who will also advise you on locations within residential areas. We thank you for the continued support of our mission to help neighbours in need.

### Rescheduled Events at Pa Maria Marist Spirituality Centre 78 Hobson Street, Thorndon:

Because of refurbishment work, events in July have been postponed, New dates are as follows:

**Non-Residential Guided Retreat: "Companions on the Journey".** Is now August 14-18, 9.30am-4.00pm each day. \$200. Places available.

**Winter Film Series: "Called Beyond Ourselves"**- 5 Evenings, 7.00pm-9.30pm. Places available for the following Seasons: Wednesdays 9, 16, 23, 30 August & 6 September or Thursdays 10, 17, 24, 31 August & 7 September. Kōha. For further information and/or to register please contact Fr Brian Cummings SM: phone 04 2124691 or 021703580 or email bgcummings@xtra.co.nz.

### Catholic Lawyers

The St Thomas More Society is holding its annual Mass in the Sacred Heart Cathedral Chapel at 5.45pm on 22 June with its annual Dinner to follow at the Wellington Club afterwards. All Catholic lawyers and law students are invited to attend. Anyone interested please email pam.churchman@barristerscomm.com or phone Pam on 914 1050 by 15 June for further details.

### Engaged Encounter

Engaged Encounter is a weekend experience for couples intending to be married. Remaining weekends for 2017 are 22-23 July and 11-12 November. Registrations close 2 weeks before. Venue: Presbytery, 301 Karori Road, Karori, Wellington. For more details go to the website at www.ceewellington.org.nz. Phone Kate & Simon Olsen on 04 801 6192, or email simonolsen@gmail.com.

### Church Guardians

Each day our Church is looked after by Guardians who take it in turn to spend an hour in the Church ensuring that the many visitors respect the sacred place that is St Mary of the Angels. We need more Guardians so that we can keep the Church open each day. If you would like to consider being part of this ministry please contact Terry Dodson on terrydodson@vodafone.co.nz or 0221035014.

### Host a Hospice Cuppa

Calling all cup of tea enthusiasts, cake bakers, scone eaters, and coffee connoisseurs to support Mary Potter Hospice by hosting a Hospice Cuppa this May & June! Take a break for a good cause and raise funds for the Hospice. Sign up by contacting Brooke at brooke.singer@marypotter.org.nz or phone 04 381 0465. Alternatively register your interest on www.hospicecuppa.co.nz/register.asp.

### ST MARY OF THE ANGELS EARTHQUAKE STRENGTHENING APPEAL

I would like to help preserve St Mary of the Angels Church

Name: \_\_\_\_\_

Address: \_\_\_\_\_

Email: \_\_\_\_\_

Tel: \_\_\_\_\_

My contribution will be made by:

Direct Credit

Cheque PLEASE SPECIFY AMOUNT

Cash \$ \_\_\_\_\_

Donations can be sent to:  
 Seismic Strengthening Fund  
 St Mary of the Angels  
 17 Boulcott St  
 Wellington 6011

Bank Account Details:  
 02-0536-0003242-23  
 Bank of New Zealand  
 Lambton Quay  
 Wellington

St Mary of the Angels is registered with the Charities Commission. All donations are tax deductible and a receipt issued.

