

For Your Diaries : 2016

2 October, Passage of the Soul - Concert by Baroque Voices

7.30pm, St Paul's Cathedral, 45 Molesworth St, Wellington. Passage of the Soul is a choral meditation on life and death through works inspired by Eastern Orthodoxy. The programme will include works by Pärt, Tavener, Rachmanninov and Stravinsky, and premiere a new work by the concert's producer, Dimitrios Theodoridis.

6 October, Adoration

Join the SMAYACs for an hour of Adoration and prayer from 6pm in the SMOA Parish Hall.

9 October, Palliser Viols at Te Papa

Robert Oliver and Palliser Viols present a free concert at Nga Toi, Arts Te Papa, Level 5 at 3pm on Sunday 9th October.

15 October, Dove Fellowship for Women

Dove Wellington invites all women to our meeting from 1.15pm-3pm on Saturday 15 October at Connolly Hall, Guildford Terrace, Wellington. This meeting, we are blessed to have Diana Ingle, Chairperson of New Zealand Catholic Charismatic Renewal, as our guest speaker. We look forward to seeing you there. Please contact Rachel Blackaby for more info: 233 2553.

15 October, Songs from The Heart - Concert

7.30pm, St Brigid's Parish, Feilding. Mezzo-soprano Wendy Kale supported by tenor Kevin O'Kane and accompanied by Sue Alexander with the young men from Hato Paora College's Kapa Haka Group adding another flavour to the mix. There will be opportunities throughout for the audience to join in this musical feast. A light supper will follow Wendy's concert.

16 October, Sunday Best - Concert

11am, St Brigid's Parish, Feilding. A smorgasbord of musical treats. Wendy Kale & Kevin O'Kane accompanied by Sue Alexander and also by St Joseph's School Kapa Haka Group. A real community event, beginning with 9am Mass, followed by a special morning tea, then the concert. Tickets can be purchased by contacting the Parish Office (06)323 3980

28 - 30 October, The Lazarus Experience Retreat

A weekend retreat based on Catholic teaching and designed to heal those suffering from a marriage break up. For further information or to register visit: www.wn.catholic.org.nz/lazarus

26-27 November - Engaged Encounter

Registrations close 11th November
Held at Presbytery, 301 Karori Road, Karori, Wellington.

WEST PLAZA HOTEL
LOCATION • COMFORT • STYLE

WEEKEND SPECIAL \$135

One night's stay &
cooked breakfast for two

BOOK NOW

*Subject to availability

westplaza.co.nz / P 0800 731 444

E reservations@westplaza.co.nz

110 Wakefield St, Wellington

This newsletter is kindly sponsored by:

Michael Burrowes
of Burrowes and Company
Barristers and Solicitors
phone (04) 473 7733

BURROWES
and Company

Barristers and Solicitors

Books * DVD's * Statues * Gifts
Rosaries * Missals * Bibles * Music
Teaching * Baptism * Confirmation
First Holy Communion

Bible Study * Advent & Christmas

www.christiansupplies.co.nz

Pleroma
Christian Supplies

Specialists In Catholic Product



Is dealing with a
**Locally Owned
Funeral Director**
important to you?



Wellington
56 Onepu Road, Kilbirnie
Telephone 387-8301
Email: harbour@funeral-link.co.nz
www.harbourcityfunerals.co.nz

A LEGACY OF FAITH



Remembering St Mary of the Angels in your will provides an ideal opportunity to make a statement of your faith and to give resources that will support your Church for years to come. Please contact the Parish Office for further details. Phone (04) 473 8074.

Quality Te Aro Offices

5-7 Vivian Street, Wellington

Great location close to Cafe district
Busy arterial road
Air conditioned
Car parking available

Office suites available at an affordable price. Semi-serviced suites (approx 18sqm) that are fully furnished. There is also a company floor area (approx 200sqm) with 5x partitioned offices, Board room and Meeting room. Shared kitchen and shower facilities. Car parking available in the building at an additional rate.

This is a must see for new businesses on a budget. Earthquake Engineering Evaluation IEP Report NBS 80 %

Contact by e-mail for further information: mariabaldock@gmail.com

The Angelus

St Mary of the Angels Parish

Church and Presbytery
17 Boulcott Street
Wellington Central
Telephone: 04 473 8074
Parish website: www.smoa.org.nz

St Mary of the Angels is a diverse community which seeks to praise and thank God in a place of calm and beauty and strives to be Christ alive in Central Wellington

MASS TIMES

Sunday

7am *St Mary of the Angels Parish Hall*
9am *Sacred Heart Cathedral*
12pm *St John's Presbyterian Church*
5pm *St Joseph's Church, Mt Victoria*

Monday to Friday

St Mary of the Angels Parish Hall
7:30am, 12:05pm & 5:15pm

Saturday

11am *St Mary of the Angels Parish Hall*

SACRAMENT OF ANOINTING

St Mary of the Angels Parish Hall
11am Mass 4th Saturday of each month

ADORATION

St Mary of the Angels Parish Hall
Monday to Friday 6:45am - 7:30am
Friday 11:00am-12:00pm

RECONCILIATION

St Mary of the Angels Presbytery
Monday to Thursday 11:30am-12:00pm
12:30pm - 1:00pm
4:30pm - 5:00pm

Friday

11:00am-12:00pm
12:30pm - 1:00pm
4:30pm - 5:00pm

Saturday

10:30am-11:00am
4:00pm - 5:00pm

Parish Priest

Fr Barry Scannell SM
smoapp@extra.co.nz

Assistant Priest

Fr Carl Telford SM

Adult Education

Fr Michael Young SM

Pastoral Worker

Sr Frances Gibbs CSB

Director of Music

Robert Oliver
robert.oliver@paradise.net.nz

Parish Accountant

Jeanette Temelo
smoamanager@extra.co.nz

Parish Office

smooffice@extra.co.nz

2 October 2016, 27th Sunday in Ordinary Time

Month of the Holy Rosary

The month of October is dedicated to the Holy Rosary. This is an opportunity to celebrate the Rosary, a gift given to the Church, which invites all to meditate upon the mysteries of Christ.

During the month of October we will reflect on the four mysteries of the Rosary, and today offer an overview of the Rosary on the middle page of the Angelus.

This month there are a number of opportunities available in the Parish to take part in the month of the Holy Rosary.

- Each weekday at 11.30am in the Parish Hall a group of our parishioners gather to pray the Rosary before the midday Mass. This is a long standing tradition in our Parish and I invite each of you, during this month of the Holy Rosary, to join with them in prayer.
- If you are unable to attend the 11.30am Rosary I encourage you to make time each week to say the Rosary, or even simply a decade.
- This Friday 7th October we celebrate the feast of Our Lady of the Rosary. Mass will be held at the usual times of 7.30am, 12.05pm & 5.15pm.
- A beautiful selection of Rosary beads and information booklets are also available for purchase from the Parish Office.

Farewell dinner for Anne Hartley

Next Sunday the Parish will be saying farewell to Anne Hartley. Anne has been a member of the Parish for over 20 years and is one of the leaders of 5pm music group.

There will be a farewell function for Anne following the 5pm Mass next Sunday 9th October. I invite you all to join in celebrating Anne's contribution to our Parish and to wish her well for her move to Australia.

Fr Barry Scannell sm
Parish Priest

This Week's Readings

First Reading Hab 1:2-3; 2:2-4
The just will live by faithfulness.

Second Reading 2 Tim 1:6-8. 13-14
Never be ashamed of witnessing the Lord.

Gospel Reading Luke 17:5-19
If you had faith!

Next Week's Readings

First Reading Kings 5:14-17
Psalm 97
Second Reading 2 Tim 2:8-13
Gospel Reading Luke 17:11-19

Planned Giving

If you would like to join the St Mary of the Angels Planned Giving Scheme please contact the Parish Office. A tax rebate of 33.3% may be claimed on all your contributions.

Last Sunday's Collection

Total: \$4,941



Columban Calendars

2017 Columban Calendars are available for purchase from the Parish Office for \$12 each. All proceeds go toward supporting St Columban's Mission Society.



Mass has been offered for:

Recently Deceased: Mary Dysart, Alice Willstrop, Mario Passuello

Anniversaries: Breda Smith, Zoe Moriarty, Norma Burns, O'Brien Reeve, Tina Lyons, John Casserley, Eileen Dysart, Claire Bourke, Sidney Hall

Prayers for the Sick: Don Hayes, Jenni Rowell, Joseph Glowazc, Jeanette Parker, Teresa Jeong, Dr Peter Brooke, Patricia McGreevy, Clem Cull, Fr Fred Bliss sm, Maureen Ayling, Paul Barber, Richard Wright, Losalia Leo, Maureen McDonald, Patricia Smyth, John Foden, Joanna Veltman, Imelda Reeve, Jan Tuinman, Kathleen Phelan.



Please remember these and any others in the Parish who are ill. If you know of anyone confined to their home or who needs a visit with Holy Communion, please contact Sister Frances at the Parish Office.

Responsorial Psalm 94

R. If today you hear his voice, harden not your hearts.

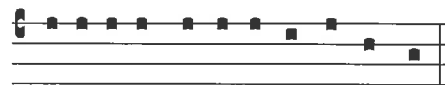
Come, ring out our joy to the Lord; hail the rock who saves us. Let us come before him, giving thanks, with songs let us hail the Lord. **R**

Come in; let us bow and bend low; let us kneel before the God who made us for he is our God and we the people who belong to his pasture, the flock that is led by his hand. **R**

O that today you would listen to his voice! 'Harden not your hearts as at Meribah, as on that day at Massah in the desert when your fathers put me to the test; when they tried me, thought they saw my work.' **R**



Ho-di e, si vo-cem e-jus audi- e-ri-tis,



no-li-te obdu-ra-re corda vestra.

Today if thou shalt hear his voice, harden not your hearts.

Marriage Encounter Retreat

Marriage Encounter are running an enrichment weekend for married couples. A Marriage Encounter weekend is specifically designed to equip couples with the tools to enhance their relationship and make it even better than it was on their wedding day! Retreat date: 7 – 9 October 2016. Masters Hall, SH2, Pahiatua. Ph. 0800 362 686 for bookings and more info.

Prayer for Seismic Strengthening Work

Gracious God, Creator of the Universe, you made us in your own image and likeness.

You gave us wisdom and understanding, grateful hearts and creative minds.

We pray that our beautiful Church will be strengthened against the peril of earthquake through the generosity of parishioners, the community of Wellington and people throughout New Zealand.

We ask, Lord, that you abundantly bless those who have already donated funds, skill and expertise to this project.

May St Mary of the Angels Church be a symbol of a unified community that will gather to praise and thank you.

Mary our Mother, pray for us.

The Rosary

The word 'rosary' emerged from the practice of Christians in the 13th and 14th Centuries who paused at wayside statues of the Blessed Virgin and repeated the words of the Hail Mary. In addition, they often laid a small circlet or coronet of entwined roses at the foot of the statues. This floral gift was called a 'rosary', and the name was gradually applied to the prayer and to the circle of beads we use to this day.

The full Rosary prayer comprises of twenty decades. Each decade is associated with one of the four mysteries. It is unusual for the 20 decades to be recited on one occasion, and the Church allocates five decades for each day of the week:

- Sunday: *The Glorious Mysteries*
- Monday: *The Sorrowful Mysteries*
- Tuesday: *The Joyful Mysteries*
- Wednesday: *The Glorious Mysteries*
- Thursday: *The Luminous Mysteries*
- Friday: *The Sorrowful Mysteries*
- Saturday: *The Joyful Mysteries*

This month, let us pray the Rosary as a prayer for peace and as a prayer that enables us to embrace with Mary and Jesus, the poor, the oppressed and all who are suffering in our world.

St Mary of the Angels Young Adults Group (SMAYACs)

The SMAYACs welcome all students and young adults in the Parish to join them in their upcoming events:

Thursday 6th October following 5.15pm Mass: Exposition in SMOA Parish Hall.

Thursday 20th October following 5.15pm Mass: Prayer Group in SMOA Parish Hall.

Afterward we go downtown for something to eat. For more info contact: smayacs@gmail.com or search for St Mary of the Angels Young Adults on Facebook.

Suzanne Aubert Celebration Day

It is 90 years today since the servant of God Suzanne Aubert, died here in Aotearoa New Zealand after dedicating 66 years of her life showing the compassionate face of Christ to some of the most neglected in society.

Today we are remembering Suzanne Aubert in a special way. It is quite remarkable when you consider that as a young woman, Suzanne Aubert chose to leave her native country of France and spend 3 years travelling to NZ on a whaling boat, so that she could answer the call of Christ: the call to serve the sick, the orphaned, the elderly and those who society seemed not to notice.

Her response to what she encountered was to establish NZ's first soup kitchen that still serves almost 40,000 meals a year. She established an orphanage for abandoned children and provided care for the handicapped, the sick and the dying.

When she died, Suzanne was accorded the largest funeral ever in NZ for a woman. The whole of Wellington stopped to pay their respects and publicly acknowledge what this remarkable woman has achieved.

The church has already officially called Suzanne Aubert as a Servant of God and the next step on her journey to sainthood is being declared Venerable.

Please join me, the Sisters here and throughout Australia and the Pacific, and the whole Catholic community as we pray that Suzanne Aubert will be recognised by the Church as one of the true and humble followers of Christ who inspires us in our own journey.

By Archbishop John Cardinal Dew

ST MARY OF THE ANGELS EARTHQUAKE STRENGTHENING APPEAL



I would like to help preserve St Mary of the Angels Church

Name: _____

Address: _____

Email: _____ Tel: _____

My contribution will be made by:

Direct Credit

Cheque PLEASE SPECIFY AMOUNT

Cash \$ _____

Donations can be sent to: Seismic Strengthening Fund St Mary of the Angels 17 Boulcott St Wellington 6011

Bank Account Details: 02-0536-0003242-23 Bank of New Zealand Lambton Quay Wellington

St Mary of the Angels is registered with the Charities Commission. All donations are tax deductible and a receipt issued.

L.T. McGuinness BUILDING CONTRACTORS LIMITED
9 Francis Place.
PO Box 9639, Wellington
Phone (04) 384 8455 Fax (04) 801 8455
Email: ltm@mcguinness.co.nz

Little Peckish Café
Feeling a little peckish?
Dukes Arcade · Great food, coffee, service
Office catering available
Phone 499 7769 · Mobile 0274 461 650

NEW WORLD WELLINGTON CITY
279 WAKEFIELD ST.
OPEN 7 DAYS | 7AM - MIDNIGHT
WWW.WGTNCITYNEWWORLD.CO.NZ